



**PLAYGROUND
CONSTRUCTION**



Product Catalog

**SHOOTING RANGE SETUP
TURF INSTALLATION & PLAYGROUND CONSTRUCTION
MAPLE SPORTS FLOORING
GYM SETUP & EQUIPMENT
SPORTS EQUIPMENT
SPORTSWEAR**

Five Rings Sports is promoted by Dr. Harpreet Kaur, sports woman who has represented India at the international level and has many other achievements in the sporting world to her credit. She believes in developing creative, hands-on activities & lessons to encourage a love for sports.

For her students, she is a guide who enjoys working with people of multi-varied backgrounds. She is highly qualified with Masters Degree in Physical Education and also a Doctorate from the prestigious Panjab University, Chandigarh (India) in the field. Mentored many international stars in various games during her teaching career as a Physical Educationist.

AUTHOR

She has authored many books for various classes in the field of Physical Education which are a part of the regular syllabus of many schools and colleges all over India.

ACHIEVEMENTS IN SPORTS

Asian Championships (International) - Represented India as a player
Senior National Softball Championships - 4 Gold Medals
All-India Inter-University Softball Championships - 2 Gold Medals
North Zone Softball Championships - 1st position
State level Softball Championships - 2 Gold Medals

RESEARCH/CASE STUDIES

- A case study of life, professional career and contribution of Arjuna awardee, Mohinder Singh Gill in the field of Athletics ISSN:2322-018X

- A study with regards to professional career and contribution of Arjuna awardee Brigadier Harcharan Singh in the field of Hockey - ISSN: 0976-1136





MAKE IN INDIA SPORTS ARCHITECTURE

Our Story

Our start-up story quite closely identifies with the story of Phoenix, symbolising ashes to azure struggle, moving through the challenges of structural evolutions, strategic tie ups and finally transforming into what we are today.

Five Rings Sports is an initiative by sports enthusiast having three decades of core sports exposure. We took to track with a vision of Redefining Sports Architecture in India and creating a brand synonymous to reliability and excellence. Being a passion driven enterprise, our values are the guiding light for us and have motivated us to take a leap of faith and become our best version.

Our Motto

Our motto 'Head High Heels Down' showcases our resolve and diligence towards creating finest sports architecture across the country, backed with our constant endeavour to innovate, evolve and absorb from the feedback provided by our clients.

Collaborative Excellence

Our endeavour is to tread the path of excellence and exceed the expectations of our customers. In doing so, we know that we singularly cannot master every aspect of sports architecture therefore we chose the path of collaboration with the Industry's best-in-class to deliver the finest to our customers.



Innovative Customization

We aspire not solely to sell but also to create specific solutions, closest to our customers desire. We are passionate about new technologies in sports architecture and constantly seek to indulge in it and introduce the same in our work.



Challenging the Status Quo

Having always ventured the path less travelled rather than settling for conventional & mediocre recreations of sports infrastructure, we do things differently. We continually look out for industry 'best practices', measuring and benchmarking ourselves with the best in the industry.





WE DESIGN & BUILD

Natural Sports Stadiums

Multi - Sport Turf Arenas

Turf Surfaces for all Sports

Box Cricket Arenas

Pitch & Ground Hybrid Rollers

Cricket Bowling Machines

LED Sports Lighting



REACH OUT TO US IF YOU ARE

Wanting to create a commercial sports setup for any single sport or a multi-sports venue.

Wanting to convert any existing space into personal Sports Turf Arena.

Planning to start a Cricket, Badminton, Football or Multisport Academy and need a customised design or an end-to-end solution.

Having an existing ground and require add-on infrastructure or equipment i.e. Pitch Rollers, Score boards, Sight Screens & many more.

Cricket Bowling Machines for Sports Academy, Clubs, Schools, Offices and Pay and Play Arenas.

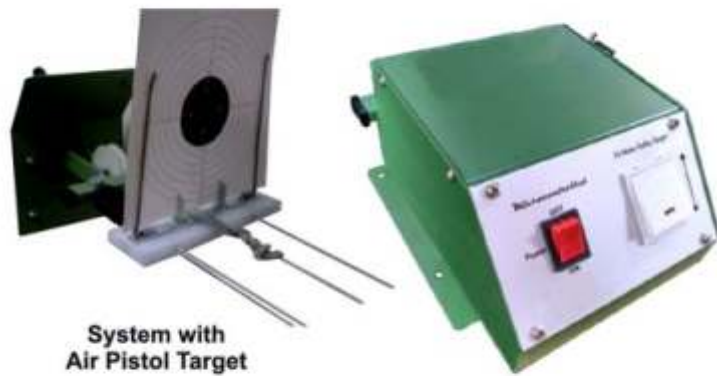
Thinking of Lighting up your existing ground with sporting LED lights.

PLAYGROUND CONSTRUCTION





SHOOTING RANGE SETUP



Product Description :

The Electronic Moving Target Carrier system is specially designed to substitute for similar imported equipment used in 10 mtr ranges of air pistol and air rifle shooting competition. It comprises of target carrier mounted on nylon rope, which is passed around two pulleys. The pulley at the butt-end is a dummy while the other, mounted on the control box, is the drive pulley. The control box, which is to be mounted at the shooter's end at a suitable height, comprises of a reversing motor coupled to the drive pulley. The target carrier can be moved forward or backward by simply pressing a buttons fitted on the top of control box.

The set consists of the following:

- **Moving Target Carrier.**
- **Butt End Assembly.**
- **Bullet Catcher.**
- **Lamp Shade.**
- **Driving Rope**





MOVING TARGET TRAINING TROLLEYS



FIVE RINGS TARGET TRAINING system of versatile targets which are programmable from Firer's End to perform various movements for firing practices. The system is designed for use both at outdoor and indoor shooting ranges. It is portable and easy to operate. It is a rugged, all-weather system and meets IP 65 standards.

FIVE RINGS TARGET TRAINING The system is available both in wired and wireless configurations and operates either with 230V AC 50 Hz or with DC battery power.

FIVE RINGS TARGET TRAINING

Features:

Designed for outdoor live firing

Provides realistic environment for specialized training

Improves reflex shooting of trainees

Records single shot slow fire, single shot rapid fire and fully automatic fire

Allows instructor to set exposure time of target

FIVE RINGS TARGET TRAINING

Accommodates various types of Infantry targets

Embedded motion sensors expose target automatically when firer goes close to it

Includes facility to illuminate target for night firing

Operates either with 230V AC 50 Hz or DC battery power and between 0-50°C

Portable and easy to install

Functionalities:

The FIVE RINGS TARGET TRAINING is designed to expose the target to the firer in the following modes:

Pop-Up

Slicing

Swing Out

Rotate

Horizontal Sliding Targets:

The system (target) can slide horizontally along the length of the firing butt, or to any pre-set length on an electronically-controlled track. Multiple targets can be used simultaneously. The speed can be varied up to 2mtrs per second.

Remote Control Unit:

The hand-held RF-based remote control unit allows setting up of target movements, sensitivity of hit detection sensor and different exercises. It also shows bullet hits; allows instructor to control LCD contrast, identifies lanes and displays battery status. The remote control has a range of over 1km and can control up to 8 targets simultaneously, extendable with programming.



ASTROTURF SETUP



DETAILS:

All International Federations Approved Turf Products from FIFA, FIH, ITF

Best quality monofilament & fibrilant yarn which leads to a safer and environmental friendly product

Highest quality Technical Specification when it comes to Dtex, Gauge, Stitch Rate, Yarn Thickness

Multiple carpet backing options which includes Latex, PU & PRT

High UV resistance

Excellent abrasion resistance

Products Titanium-13 & 15 can be used for Multi Sports Activities

Environment friendly due to less water usage

Easy to maintain



BOX CRICKET–A NEW FACE OF CRICKET

Box Cricket has taken this game to a next level where weather, Daylight and availability of ground is no longer a hurdle for Cricket lovers.

Call Our Experts to your site and we will recreate the magic of Cricket for you .





BOX CRICKET - SCOPE OF WORK

Both the Turf Cricket & Box Cricket arenas can be designed in basements, indoor spaces and in open fields.

Base Construction

Cement, wet mix and many others multiple options where base can be prepared for installing the turf,

Net Cage with Net Curtains for Practice Bays

We offer more than 10 suggestive options for designing the net cages for indoor and outdoor setups. Our designers also create practice pitch bays separated by movable net curtains.

LED Sporting lights

Sports lighting industry has come a long way with LED lights specially created for indoor & outdoor sports. Based on the requirement of telecast we suitably suggest the Lux levels & accordingly install the lights in arenas.

High Bounce 10mm Turf

Our High Bounce turf is an internationally acclaimed product & comes with a 3 year warranty. It is installed by our experienced professionals and will last for decades.





CRICKET TURF & PRACTICE NET CAGE

Our 9.5 mm special turf for cricket is designed for high bounce and perfect accuracy of ball in terms of spin and speed. This turf is an all weather turf and comes with a life span of around 15 years. This turf is suitable for cricket net cages, practice pitches, multisport fields and in box cricket arenas.

SPECIFICATIONS

- Pile Height - 9.5mm
- Stitch Rate - 36/10cm
- Dtex - 8500
- Gauge - 3/16





CRICKET TURF & PRACTICE NET CAGE

Our Cricket arena setup is a perfect blend of practice and recreational cricket for commercial & personal practice. It can be easily installed in basement, cricket clubs, schools, terraces, offices and any open place.

SPECIFICATIONS

- Practice Net cage with net of Customised Size
- Cricket Turf 9.5 mm (Full Pitch & Half Pitch options)
- Automatic Bowling Machine with Auto feeder





SPECIAL CRICKET TURF PITCH CONSTRUCTION

Over the years we have emerged as the number one choice for clubs, schools or institutions around the country for either laying a brand new pitch or relaying the existing pitch. We are also the most sought after when it comes to preparing as well as maintaining the cricket ground as well as the cricket pitch through out the country.

Special Cricket Turf Pitch Construction

Product Code : CP-T

Specification :

Processes and special materiel used to make the Cricket Pitch as per international standards.

A. Digging will be done up to 7" to 10" deep.

B. Leveling, Dressing , Earth cutting will be done for Cricket Match Pitches & Practice Pitches.

C. Material Use in Layers :

- **Anti-Termite Pest Control**
- **Brick Blast**
- **Special Sheet (inside fibre thread)**
- **Special Rubber**
- **Specially Design Blocks For Extra Bounce**
- **Using the Blocks specific cricket pitch areas**
- **Ist Layer of Black Clay**
- **IInd Layer of Black Clay**
- **Special Refined Top Layer of Black Clay**
- **Anti-Termit Pest Control**
- **Special Cricket Turf Grass**





CEMENTED CRICKET PITCH CONSTRUCTION

Specification :

1. Digging will be done up to 6" deep.
2. Leveling, Dressing, Earth cutting will be done for Cricket Cemented Practice Pitch.

Thereafter, the following processes will be done to make the pitch as per international standards.

- a. Layer of brick blast 5" thick
- b. RCC layer up to 4"
- c. Cemented layer

SPECIAL CRICKET COIR MATTING

Specification :

Special 4 Shaft Cricket Coir Matting

Color - Natural

Size :

- a) : 8' X 33' & 8' X 66'
- b) : 9' X 33' & 9' X 66'



CRICKET TURF PITCH - BLACK CLAY

Cricket pitches and their soils have specific requirements. These are much different to what is required on most other turf surfaces. Soils are made out of sand, silt and clay. A clay soil with grass cover is needed to create a flat hard cricket pitch.

1. Cricket pitch soil with high clay content - 50% to 70%.
2. Clay particles are below 0.002 of a millimetre in size or 2 microns.
3. 400 cu ft of raw clay
4. Cricket pitch soils with high clay content - 50% to 70%
5. Clay particles below 0.002 of a millimetre in size or 2 microns.
6. 50 kg bag of fine top dressing clay.





BASKETBALL–SYNTHETIC & TILE COURTS

Basketball courts since the beginning were restricted to use of the hardwood for indoor arenas, however with basketball being played outdoor as well has multiple court surfaces in vogue.

We suggest the following surfaces for Basketball and Multisport Arenas.

Synthetic Surfaces

There are varied layers options (5, 6, 7, 8 & 9)

PP Tiles

15mm PP tiles are interlocking & are a ready to install & easy to dismantle solution for Basketball courts.

High Bounce Turf

10 mm High bounce sports turf can be easily pasted on hard surface and can lasts for decades.





BASKETBALL-SYNTHETIC & TILE COURTS





MULTI-SPORT TURF ARENAS

Multisport Turf arenas are need of the hour due to constantly shrinking play spaces in urban vicinities. These arenas enable Universities, Schools & Clubs to offer multiple sports options i.e. tennis, volleyball, hockey, football, cricket and basketball.

MULTISPORT TURF ARENA SPECIFICATIONS

- Multiport Turf - 12mm, 17mm & 19mm
- Turf is a blend of Bounce & Cushion
- Multisport markings of up to 5 sports in one arena
- Net cage / Net curtains
- Lighting for both Indoor and Outdoor arenas





MULTI-SPORT TURF ARENAS





TURF FIELD WITH RUNNING TRACKS





TENNIS, VOLLEYBALL & OTHER ARENAS





BADMINTON VINYL COURTS

Fiverings Sports has been highly successful in getting the badminton vinyl court installations done across India. We have some of the finest Vinyl products in our inventory. Our exclusive collaboration with an industry leader, Tuganias, has ensured customer delight with quickest possible model of installation.

Vinyl Court Specifications

- BWF approved
- Thickness - 4.5 mm, 6 mm, 7 mm, & 8 mm
- Pattern - Sand, Litchi & 10 more colours





BADMINTON SHED & VINYL COURTS





HYBRID PITCH & GROUND ROLLERS

Fiverings Sports has collaborated with the most prominent and innovative Pitch Roller Manufacturers of India. We have 16 variants of rollers ranging from Hybrid to Manual. Our rollers are the most cost effective and maintenance free Rollers manufactured in India.

What makes our Rollers Exclusive

- Hybrid (Electric or Petrol/Diesel) Dual
- Purpose based on Variable Weight No
- Maintenance & Pan India Service Low
- operating cost



HYBRID PITCH & GROUND ROLLERS



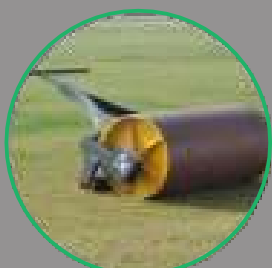
Hybrid Double wheel Diesel/Petrol & Electric Rollers (Weight 1.5 Ton – 3 Ton)- These rollers are a unique combination of Electric and Fuel (Petrol/Diesel) engines , Perfect choice where there is an erratic electricity supply, Based on the net weight and gross weight serves purpose of two rollers. These rollers can be used with fuel(Petrol/Diesel) or electricity as per availability



These models are maintenance free and with lowest running cost . Electric Double wheel Rollers (Weight 1.5 Ton – 3 Ton) -Highly economical and low running cost as there is no fuel requirement, This roller runs on only Electricity.



Walk Behind Hybrid Single wheel Rollers (Weight 750 Kgs – 1 Ton)- These rollers are also a combination of Electric and Fuel(Petrol/Diesel) engines , Perfect choice where there is an erratic electricity supply. These models can be easily operated by single operator.



Manual Rollers (500 Kgs – 1 Ton)- Our Manual rollers are crafted from quality thick metal sheets, We provide an additional small roller attached with the main rolling wheel and also our rolling handle is fixed four feet above to make it easy to operate by a single individual.



DIESEL & ELECTRIC HYBRID ROLLERS

FEATURES

- Best option where Electric supply is erratic.
- Operating cost is very Low . One
- Roller can serve the purpose of two different rollers as net and gross weight options are available.
- Pan India Service
- Kirloskar Engines
- Super silent and maintenance free.



HYBRID DIESEL & ELECTRIC VARIANTS

Specifications	1.5 Ton	2 Ton	3 Ton
Hybrid Variants	Diesel & Electric	Diesel & Electric	Diesel & Electric
Gross Weight with Oil/Water	1500 KG	2000 KG	3000 KG
Net Weight	1000 KG	1400 KG	2300 KG
Start Mechanism	Electric Button Start	Electric Button Start	Electric Button Start
Speed Options	Upto 10kmph	Upto 10kmph	Upto 10kmph
Rolling Width in inches	36	36	48
Power of Motor	3HP	3HP	Upto 5HP
Forward and Reverse Mechanism	Knob AT	Knob AT	Knob AT
Body Type	MS with Roof	MS with Roof	MS with Roof
Control Mechanism	Steering	Steering	Steering



PETROL & ELECTRIC HYBRID ROLLERS

KEY HIGHLIGHTS

- Best option where Electric supply is erratic.
- Operating cost is low.
- One Roller can serve the purpose of two different rollers as net and gross weight options are available.
- Pan India Service
- Kirloskar Engines.
- Super silent and maintenance free.



HYBRID PETROL & ELECTRIC VARIANTS

Specifications	1.5 Ton	2 Ton	3 Ton
Hybrid Variants	Petrol & Electric	Petrol & Electric	Petrol & Electric
Gross Weight with Oil/Water	1500 KG	2000 KG	3000 KG
Net Weight	1000 KG	1400 KG	2300 KG
Start Mechanism	Electric Button Start	Electric Button Start	Electric Button Start
Speed Options	Upto 10kmph	Upto 10kmph	Upto 10kmph
Rolling Width in inches	36	36	48
Power of Motor	3HP	3HP	Upto 5HP
Forward and Reverse Mechanism	Knob AT	Knob AT	Knob AT
Body Type	MS with Roof	MS with Roof	MS with Roof
Control Mechanism	Steering	Steering	Steering

PETROL & ELECTRIC HYBRID ROLLERS

KEY HIGHLIGHTS

- Best option where Electric supply is erratic.
- Operating cost is low.
- One Roller can serve the purpose of two different rollers as net and gross weight options are available.
- Pan India Service
- Kirloskar Engines.
- Super silent and maintenance free.



HYBRID PETROL & ELECTRIC VARIANTS

Specifications	1.5 Ton	2 Ton	3 Ton
Hybrid Variants	Petrol & Electric	Petrol & Electric	Petrol & Electric
Gross Weight with Oil/Water	1500 KG	2000 KG	3000 KG
Net Weight	1000 KG	1400 KG	2300 KG
Start Mechanism	Electric Button Start	Electric Button Start	Electric Button Start
Speed Options	Upto 10kmph	Upto 10kmph	Upto 10kmph
Rolling Width in inches	36	36	48
Power of Motor	3HP	3HP	Upto 5HP
Forward and Reverse Mechanism	Knob AT	Knob AT	Knob AT
Body Type	MS with Roof	MS with Roof	MS with Roof
Control Mechanism	Steering	Steering	Steering

KEY HIGHLIGHTS

- Best option where Electric supply is not an issue.
- Operating cost is lowest among all rollers.
- One Roller can serve the purpose of two different rollers as net and gross weight options are available.
- Pan India Service
- Super silent and maintenance free.

ELECTRIC ROLLERS



ELECTRIC VARIANTS

Specifications	1.5 Ton	2 Ton	3 Ton
Gross Weight with Oil/Water	1500 KG	2000 KG	3000 KG
Net Weight	1000 KG	1400 KG	2300 KG
Start Mechanism	Electric Button Start	Electric Button Start	Electric Button Start
Speed Options	Upto 10kmph	Upto 10kmph	Upto 10kmph
Rolling Width in inches	36	36	48
Power of Motor	3HP	3HP	Upto 5HP
Forward and Reverse Mechanism	Knob AT	Knob AT	Knob AT
Body Type	MS with Roof	MS with Roof	MS with Roof
Control Mechanism	Steering	Steering	Steering

WALK BEHIND ELECTRIC ROLLERS

Single wheel walk behind rollers are a perfect fusion of electric and manual rollers where a single operator can control the machine either sitting behind, standing on the panel or by remote control. Electric single wheel rollers comes in two weight categories and are meant for locations where electric supply is not an issue.

SPECIFICATIONS ELECTRIC ROLLER

Model 1 -Net Weight : 400 Kg

Model 2 -Net Weight : 600 Kg

Gross Weight : 750 Kg.

Gross Weight : 1000 Kg.

- Weight variation(Net weight & Gross weight) as mentioned above for both models is done by filling oil/water
- Rolling width of 36 inches.
- Motor Power : Upto 3 HP (ISO 9001)
- Engine Starting Type : Electric
- Sit Behind, Stand Behind & Remote Control Option
- Super Silent & Eco Friendly
- Safety Drive (Computerised Programming)
- Speed : Variable speed
- Easy to move forward or reverse.
- Accessories Providing : Electrical Wire 80 mt. (ISI)
- Very low maintenance and running costs



WALK BEHIND HYBRID ROLLERS

Single wheel walk behind rollers are a perfect fusion of hybrid and manual rollers where a single operator can control the machine either sitting behind, standing on the panel or by remote control. There are two variants (Diesel with Electric or Petrol with Electric) designed in this section and is apt for locations where electric supply is not regular, staff is less and there are budget constraints. All in all a total value for money.

SPECIFICATIONS

- Net Weight : 750 Kg.
- Gross Weight : 1000 Kg.
(Post filling oil/water)
- Rolling width of 36 inches.
- Motor Power : Upto 3 HP (ISO 9001)
- Engine : Diesel or Petrol
- Engine Starting Type : Electric
- Sit Behind, Stand Behind & Remote Control Option
- Super Silent & Eco Friendly
- Safety Drive (Computerised Programming)
- Speed : Variable speed
- Easy to move forward or reverse.
- Accessories Providing : Electrical Wire 80 mt. (ISI)
- Very low maintenance and running costs.





MANUAL ROLLERS

Manual rollers are one of the Ae's finest products and have been designed for easy operation and uniform rolling , there is an extra roller attached with the main drum to provide that finer rolling experience .Manual rollers comes in two weight categories.

SPECIFICATIONS

Model 1 -Net Weight : 400 Kg

Model 2 -Net Weight : 600 Kg

Gross Weight : 750 Kg.

Gross Weight : 1000 Kg.

- Weight variation(Net weight & Gross weight) as mentioned above for both models is done by filling oil/water
- Rolling width of 36 inches.
- Operating handle fixed 1 meter above ground for ease of push & pull and rolling can be done by a single operator as well.
- Easy to move forward or reverse.
- 15mm to 18 mm thick Ms sheet for smooth rolling.





SQUASH COURTS

Stallion Sports has been instrumental in developing Squash courts in Educational institutions & Sports Arenas. We offer our services with a high level of professional consulting for creating a superior level of Courts .



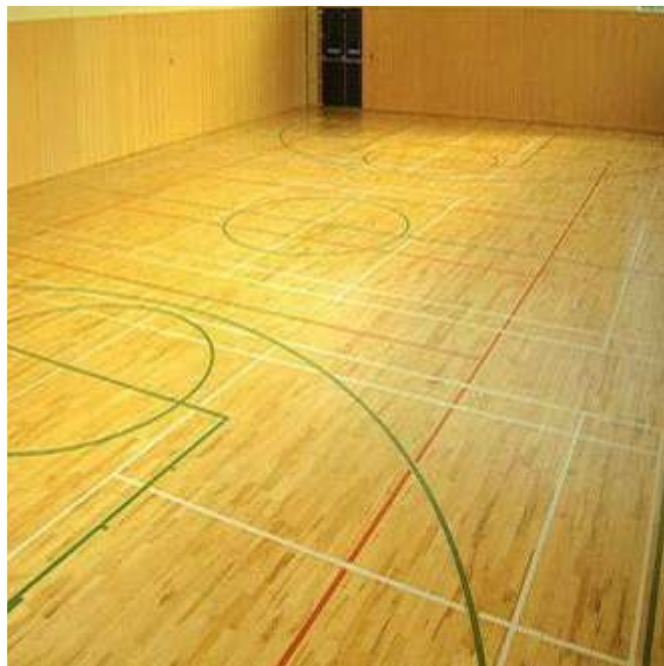


CUSTOMIZED PRODUCTS





MAPLE SPORTS FLOORING





www.fiveringssports.com

India's Leading Brand In Fitness



FR-2001 | Chest Press

Machine Size :	(L*W*H (MM)): 1545*x950*x1605*
Machine Weight:	208KGS
Weight Stack:	100KGS



FR-2002A | Seated Straight Arm Clip Chest

Machine Size :	(L*W*H (MM)): 1265*x1410*x2020*
Machine Weight:	218KGS
Weight Stack:	100KGS



FR-2002 | Butterfly

Machine Size :	(L*W*H (MM)): 1540*x1135*x1605*
Machine Weight:	218KGS
Weight Stack:	100KGS



FR-2003 | Shoulders

Machine Size :	(L*W*H (MM)): 1700*x1540*x1605*
Machine Weight:	222KGS
Weight Stack:	100KGS



FR -2004 | Seated Row

Machine Size :	(L*W*H (MM)): 1420*x1130*x1605*
Machine Weight:	204KGS
Weight Stack:	100KGS



FR -2006 | Biceps Curl

Machine Size :	(L*W*H (MM)): 1140*x1195*x1605*
Machine Weight:	200KGS
Weight Stack:	100KGS



FR -2007 | Triceps Press

Machine Size :	(L*W*H (MM)): 1500*x1265*x1605*
Machine Weight:	210KGS
Weight Stack:	100KGS



FR -2008 | Upper Limbs

Machine Size :	(L*W*H (MM)): 910*x1570*x2260*
Machine Weight:	260KGS
Weight Stack:	100KGS



FR-2009 | Lower Back

Machine Size	: (L*W*H (MM)): 1175*x1335*x1605*
Machine Weight:	214KGS
Weight Stack:	100KGS



FR-2010 | Abdominal Machine

Machine Size	: (L*W*H (MM)): 1210*x1155*x1645*
Machine Weight:	218KGS
Weight Stack:	100KGS



FR-2011 | Rotary Torso

Machine Size	: (L*W*H (MM)): 1155*x1280*x1605*
Machine Weight:	214KGS
Weight Stack:	100KGS



FR-2012 | High Pulley

Machine Size	: (L*W*H (MM)): 1455*x1340*x1785*
Machine Weight:	224KGS
Weight Stack:	100KGS



FC-2012A | Seated Horizontal Pully

Machine Size :	(L*W*H (MM)): 1570*x1130*x1605*
Machine Weight:	194KGS
Weight Stack:	100KGS



FR-2013A | Seated Leg Curl

Machine Size :	(L*W*H (MM)): 1770*x1195*x1605*
Machine Weight:	226KGS
Weight Stack:	100KGS



FR-2013A | Horizontal Leg Curl

Machine Size :	(L*W*H (MM)): 1650*x1185*x1605*
Machine Weight:	210KGS
Weight Stack:	100KGS



FR-2014 | Leg Extension

Machine Size :	(L*W*H (MM)): 1675*x1245*x1605*
Machine Weight:	218KGS
Weight Stack:	100KGS



FR-2015 | Leg Press

Machine Size :	(L*W*H (MM)): 2045*x1245*x1605*
Machine Weight:	222KGS
Weight Stack:	100KGS



FR-2016 | Multi Hip

Machine Size :	(L*W*H (MM)): 1290*x1015*x1605*
Machine Weight:	216KGS
Weight Stack:	100KGS



FR-2017A | Standing Calf Machine

Machine Size :	(L*W*H (MM)): 1170*x1285*x1715*
Machine Weight:	218KGS
Weight Stack:	100KGS



FR-2016A | Standing Leg Extension

Machine Size :	(L*W*H (MM)): 1220*x870*x1645*
Machine Weight:	214KGS
Weight Stack:	100KGS



FR-2018 | Inner Thigh Adductor

Machine Size :	(L*W*H (MM)): 1365*x1420*x1645*
Machine Weight:	202KGS
Weight Stack:	100KGS



FR-2019 | Outer Thigh Abductor

Machine Size :	(L*W*H (MM)): 1355*x1270*x1645*
Machine Weight:	202KGS
Weight Stack:	100KGS



FR-2020 | Smith Machine

Machine Size :	(L*W*H (MM)): 2450*x1335*x2370*
Machine Weight:	218KGS



FR-2021 | Deluxe Squat Rack

Machine Size :	(L*W*H (MM)): 1595*x1325*x2090*
Machine Weight:	120KGS



FR-2022

Incline 45° Leg Press

Machine Size	: (L*W*H (MM)): 2230*x1355*x1450*
Machine Weight:	198KGS



FR-2022A

Hack Squat Machine

Machine Size	: (L*W*H (MM)): 2230*x1350*x1590*
Machine Weight:	222KGS



FR-2022A

Olympic Flat Bench

Machine Size	: (L*W*H (MM)): 1595*x1325*x2090*
Machine Weight:	120KGS



FR-2024

Olympic Decline Bench

Machine Size	: (L*W*H (MM)): 1505*x1600*x1185*
Machine Weight:	78KGS



FR-2025B | Incline Bench

Machine Size :	(L*W*H (MM)): 1990*x1650*x1480*
Machine Weight:	98KGS



FR-2025B | Vertical Bench

Machine Size :	(L*W*H (MM)): 1110*x1240*x1720*
Machine Weight:	84KGS



FR-2026 | Roman Chair

Machine Size :	(L*W*H (MM)): 1510*x650*x880*
Machine Weight:	50KGS



FR-2027 | Vertical Knee Raise

Machine Size :	(L*W*H (MM)): 1050*x780*x1580*
Machine Weight:	56KGS



FR-2028 | Web Board

Machine Size	: (L*W*H (MM)): 1650*x620*x1160*
Machine Weight:	47KGS



FR-2029 | Seated Calf Machine

Machine Size	: (L*W*H (MM)): 1125*x630*x920*
Machine Weight:	38KGS



FR-2030 | Dumbbell Rack

Machine Size	: (L*W*H (MM)): 2290*x800*x84*
Machine Weight:	72KGS



FR-2031 | T-arm Machine

Machine Size	: (L*W*H (MM)): 1800*x880*x540*
Machine Weight:	60KGS



FR-2032 | Abdominal Machine

Machine Size	: (L*W*H (MM)): 1770*x830*x1030*
Machine Weight:	50KGS



FR-2037 | Draw Muscle Machine

Machine Size	: (L*W*H (MM)): 1320*x490*x970*
Machine Weight:	28KGS



FR-2036 | Adjustable Web Board

Machine Size	: (L*W*H (MM)): 1650*x650*x950*
Machine Weight:	42KGS



FR-2035 | Crunch Bench

Machine Size	: (L*W*H (MM)): 1740*x630*x1040*
Machine Weight:	45KGS



FR-20836 | Flat Bench

Machine Size :	(L*W*H (MM)): 1300*x700*x460*
Machine Weight:	20KGS



FR-2037 | Multi Adjustable Bench

Machine Size :	(L*W*H (MM)): 1350*x675*x530*
Machine Weight:	38KGS



FR-2038 | Utility Bench

Machine Size :	(L*W*H (MM)): 920*x730*x860*
Machine Weight:	22KGS



FR-2039 | Barbell Rack

Machine Size :	(L*W*H (MM)): 820*x910*x1340*
Machine Weight:	54KGS



FR -20840 | Scott Bench

Machine Size	: (L*W*H (MM)): 800*x760*x840*
Machine Weight:	38KGS



FR -2041 | Weight Plate Tree

Machine Size	: (L*W*H (MM)): 1320*x490*x970*
Machine Weight:	28KGS



FR -2042 | Functional Trainer

Machine Size	: (L*W*H (MM)): 1680*x1135*x2450*
Machine Weight:	375KGS



FR -2043 | Cable Cross Over

Machine Size	: (L*W*H (MM)): 3775*x800*x2375*
Machine Weight:	366KGS



FR-4001 | Converging Shoulder Press

Machine Size :	(L*W*H (MM)): 1610*x1480*x1296*
Machine Weight:	245KGS
Weight Stack:	100KGS



FR-4002 | Converging Chest Press

Machine Size :	(L*W*H (MM)): 1490*x1135*x1296*
Machine Weight:	278KGS
Weight Stack:	100KGS



FR-4003 | Diverging Lat Pulldown

Machine Size :	(L*W*H (MM)): 1560*x1290*x1960*
Machine Weight:	305KGS
Weight Stack:	100KGS



FR-4004 | Diverging Seated Row

Machine Size :	(L*W*H (MM)): 1620*x1240*x1296*
Machine Weight:	287KGS
Weight Stack:	100KGS



FR-4005 | Leg Extension

Machine Size :	(L*W*H (MM)): 1270*x1210*x1296*
Machine Weight:	315KGS
Weight Stack:	100KGS



FR-4005 | Seated Leg Curl

Machine Size :	(L*W*H (MM)): 1500*x1200*x1296*
Machine Weight:	310KGS
Weight Stack:	100KGS



FR-4006 | Independent Biceps Curl

Machine Size :	(L*W*H (MM)): 1620*x1350*x1296*
Machine Weight:	260KGS
Weight Stack:	100KGS



FR-4007 | Triceps Press

Machine Size :	(L*W*H (MM)): 1580*x1100*x1296*
Machine Weight:	300KGS
Weight Stack:	100KGS



FR -4008 | Abdominal Crunch

Machine Size :	(L*W*H (MM)): 1375*x1236*x1450*
Machine Weight:	245KGS
Weight Stack:	100KGS



FR -4009 | Leg Press

Machine Size :	(L*W*H (MM)): 1930*x1100*x1400*
Machine Weight:	378KGS
Weight Stack:	100KGS



FR -4010 | Adductor

Machine Size :	(L*W*H (MM)): 1700*x1600*x1296*
Machine Weight:	270KGS
Weight Stack:	100KGS



FR -4011 | Adductor

Machine Size :	(L*W*H (MM)): 1700*x1280*x1296*
Machine Weight:	270KGS
Weight Stack:	100KGS



FR-4012 | Pectoral Fly

Machine Size :	(L*W*H (MM)): 1585*x1220*x1395*
Machine Weight:	245KGS
Weight Stack:	100KGS



FR-4013 | Back Extension

Machine Size :	(L*W*H (MM)): 1300*x1200*x1296*
Machine Weight:	240KGS
Weight Stack:	100KGS



FR-4014 | Prone Leg Curl

Machine Size :	(L*W*H (MM)): 1750*x1125*x1296*
Machine Weight:	259KGS
Weight Stack:	100KGS



FR-4015 | Glute

Machine Size :	(L*W*H (MM)): 2060*x980*x1380*
Machine Weight:	249KGS
Weight Stack:	100KGS



FR-4016

Diverging Seated Row

Machine Size :	(L*W*H (MM)): 1580*x1355*x1450*
Machine Weight:	240KGS
Weight Stack:	100KGS



FR 4017

Calf Extension

Machine Size :	(L*W*H (MM)): 1490*x1150*x1390*
Machine Weight:	241KGS
Weight Stack:	100KGS



FR 4018

Lateral Raise

Machine Size :	(L*W*H (MM)): 1290*x1100*x1310*
Machine Weight:	248KGS
Weight Stack:	100KGS



FR 4019

Pec Fly / Rear Delt

Machine Size :	(L*W*H (MM)): 1435*x1735*x1970*
Machine Weight:	240KGS
Weight Stack:	100KGS



FR-5001 | CHEST PRESS

Machine Size :	(L*W*H (CM)): 145*x132*x180*
Machine Weight:	258KGS
Weight Stack:	100KGS



FR-5002 | PECTORAL FLY

Machine Size :	(L*W*H (CM)): 127*x97*x163*
Machine Weight:	248KGS
Weight Stack:	100KGS



FR-5003 | PECTORAL FLY/REAR DELTOID

Machine Size :	(L*W*H (CM)): 1142*x147*x204*
Machine Weight:	254KGS
Weight Stack:	100KGS



FR-5004 | ROW

Machine Size :	(L*W*H (CM)): 142*x152*x163*
Machine Weight:	234KGS
Weight Stack:	100KGS



FR-5005 | PULLDOWN

Machine Size :	(L*W*H (CM)): 137*x132*x198*
Machine Weight:	249KGS
Weight Stack:	100KGS



FR-5006 | ASIST DIP CHIN

Machine Size :	(L*W*H (CM)): 201*x127*x221*
Machine Weight:	230KGS
Weight Stack:	100KGS



FR-5007 | SHOULDER PRESS

Machine Size :	(L*W*H (CM)): 146*x109*x163*
Machine Weight:	237KGS
Weight Stack:	100KGS



FR-5008 | LATERAL RAISE

Machine Size :	(L*W*H (CM)): 122*x109*x163*
Machine Weight:	239KGS
Weight Stack:	100KGS



FR-5009 | BICEPS CURL

Machine Size :	(L*W*H (CM)): 92*x152*x163*
Machine Weight:	243KGS
Weight Stack:	100KGS



FR-5010 | TRICEPS PRESS

Machine Size :	(L*W*H (CM)): 163*x109*x163*
Machine Weight:	255KGS
Weight Stack:	100KGS



FR-5011 | LEG EXTENSION

Machine Size :	(L*W*H (CM)): 145*x107*x162*
Machine Weight:	276KGS
Weight Stack:	100KGS



FR-5012 | SEATED LEG CURL

Machine Size :	(L*W*H (CM)): 157*x107*x162*
Machine Weight:	287KGS
Weight Stack:	100KGS



FR-5013 | LEG CURL

Machine Size :	(L*W*H (CM)): 156*107*163*
Machine Weight:	253KGS
Weight Stack:	100KGS



FR-5014 | SEATED LEG PRESS

Machine Size :	(L*W*H (CM)): 201*109*178*
Machine Weight:	287KGS
Weight Stack:	100KGS



FR-5015 | CALF EXTENSION

Machine Size :	(L*W*H (CM)): 157*102*162*
Machine Weight:	253KGS
Weight Stack:	100KGS



FR-5016 | HIP ADDUCTION

Machine Size :	(L*W*H (CM)): 160*74*163*
Machine Weight:	207KGS
Weight Stack:	100KGS



FR-5017 | HIP ABDUCTION

Machine Size :	(L*W*H (CM)): 160*x74*x163*
Machine Weight:	207KGS
Weight Stack:	100KGS



FR-5018 | GLUTE

Machine Size :	(L*W*H (CM)): 183*x91*x163*
Machine Weight:	233KGS
Weight Stack:	100KGS



FR-5019 | BACK EXTENSION

Machine Size :	(L*W*H (CM)): 165*x99*x183*
Machine Weight:	320KGS
Weight Stack:	100KGS



FR-5020 | ABDOMINAL

Machine Size :	(L*W*H (CM)): 132*x119*x162*
Machine Weight:	226KGS
Weight Stack:	100KGS



FR-5021 | TORSO ROTATION

Machine Size	: (L*W*H (CM)): 135*x112*x162*
Machine Weight:	230KGS
Weight Stack:	100KGS



FR-5022 | SMITH MACHINE

Machine Size	: (L*W*H (CM)): 124*x221*x237*
Machine Weight:	293KGS
Weight Stack:	100KGS



FR-5023 | ADJUSTABLE CABLE CROSSOVER

Machine Size	: (L*W*H (CM)): 75*x424*x239*
Machine Weight:	397KGS
Weight Stack:	100KGS



FR-5024 | DUAL ADJUSTABLE PULLEY

Machine Size	: (L*W*H (CM)): 112*x157*x236*
Machine Weight:	365KGS
Weight Stack:	100KGS



FR-5025 | OLYMPIC INCLINE BENCH

Machine Size :	(L*W*H (CM)): 130*x147*x144*
Machine Weight:	84KGS
Weight Stack:	100KGS



FR-5026 | OLYMPIC FLAT BENCH

Machine Size :	(L*W*H (CM)): 130*x124.5*x130*
Machine Weight:	68KGS
Weight Stack:	100KGS



FR-5027 | OLYMPIC DECLINE BENCH

Machine Size :	(L*W*H (CM)): 130*x173*x130*
Machine Weight:	95KGS
Weight Stack:	100KGS



FR-5028 | OLYMPIC BENCH WEIGHT STORAGE

Machine Size :	(L*W*H (CM)): 43*x71*x124.5*
Machine Weight:	39KGS
Weight Stack:	100KGS



FR-5029 | BARBELL RACK

Machine Size :	(L*W*H (CM)): 88*x97*x156*
Machine Weight:	77KGS
Weight Stack:	100KGS



FR-5030 | OLYMPIC SQUAT RACK

Machine Size :	(L*W*H (CM)): 168*x197*x192*
Machine Weight:	182KGS
Weight Stack:	100KGS



FR-5031 | OLYMPIC MILITARY BENCH

Machine Size :	(L*W*H (CM)): 129.5*x122*x168*
Machine Weight:	148KGS
Weight Stack:	100KGS



FR-5032 | FLAT BENCH

Machine Size :	(L*W*H (CM)): 117*x80*x42*
Machine Weight:	30KGS
Weight Stack:	100KGS



FR-5033 | UTILITY BENCH

Machine Size	: (L*W*H (CM)): 71*x90*x90*
Machine Weight:	23KGS
Weight Stack:	100KGS



FR-5034 | MULTI-ADJUSTABLE BENCH

Machine Size	: (L*W*H (CM)): 160*x74*x163*
Machine Weight:	83KGS
Weight Stack:	100KGS



FR-5035 | BACK EXTENSION

Machine Size	: (L*W*H (CM)): 127*x94*x97*
Machine Weight:	73KGS
Weight Stack:	100KGS



FR-5036 | ADJUSTABLE DECLINE/ABDOMINAL CRUNCH

Machine Size	: (L*W*H (CM)): 160*x74*x163*
Machine Weight:	62 KGS
Weight Stack:	100KGS



FR-5037 | AB CRUNCH BENCH

Machine Size :	(L*W*H (CM)): 158*x81*x97*
Machine Weight:	64KGS
Weight Stack:	100KGS



FR-5038 | ARM CURL BENCH

Machine Size :	(L*W*H (CM)): 84*x119*x117*
Machine Weight:	95KGS
Weight Stack:	100KGS



FR-5039 | CHIN/DIP/LEG RAISE

Machine Size :	(L*W*H (CM)): 114*x127*x233*
Machine Weight:	111KGS
Weight Stack:	100KGS



FR-M5040 | Linear Leg Press

Machine Size :	(L*W*H (CM)): 2490*x1550*x1550
Machine Weight:	320KGS



FR-3001 | Shoulder Press

Machine Size :	(L*W*H (CM)): 1700*x1320*x1500
Machine Weight:	250KGS
Weight Stack:	100KGS



FR-3002 | Vertical Press

Machine Size :	(L*W*H (CM)): 1470*x1500*x1500
Machine Weight:	232KGS
Weight Stack:	100KGS



FR-3003 | Pulldown

Machine Size :	(L*W*H (CM)): 1700*x1550*x1960*
Machine Weight:	272KGS
Weight Stack:	100KGS



FR-3004 | Triceps Extension

Machine Size :	(L*W*H (CM)): 1190*x1120*x1500*
Machine Weight:	228 KGS
Weight Stack:	100KGS



FR-M5041 | Kneeling Leg Curl

Machine Size :	(L*W*H (CM)): 1250*x1500*x1300*
Machine Weight:	140KGS



FR-M5042 | Shoulder Press

Machine Size :	(L*W*H (CM)): 1550*x1680*x1350*
Machine Weight:	160KGS



FR-M5043 | Leg Extension

Machine Size :	(L*W*H (CM)): 1450*x1550*x1150
Machine Weight:	125KGS



FR-M5044 | Biceps Curl

Machine Size :	(L*W*H (CM)): 1100*x1400*x1200*
Machine Weight:	125KGS



FR-M5045

Seated Dip

Machine Size	: (L*W*H (CM)): 1760*x1050*x950
Machine Weight:	125KGS



FR-M5046

High Row

Machine Size	: (L*W*H (CM)): 1850*x1680*x1940*
Machine Weight:	185KGS



FR-M5047

Calf Raise

Machine Size	: (L*W*H (CM)): 1550*x740*x1070*
Machine Weight:	85KGS



FR-M5048

Incline Press

Machine Size	: (L*W*H (CM)): 1270*x1580*x1910*
Machine Weight:	135 KGS



FR-M5049 | Decline Press

Machine Size :	(L*W*H (CM)): 1300*x1760*x1940*
Machine Weight:	160KGS



FR-M5050 | Row Machine

Machine Size :	(L*W*H (CM)): 1550*x1680*x1350*
Machine Weight:	160KGS



FR-M5051 | Front Pulldown

Machine Size :	(L*W*H (CM)): 1660*x1250*x1990*
Machine Weight:	150KGS



FR-M5052 | Abdominal Machine

Machine Size :	(L*W*H (CM)): 1380*x1660*x1700*
Machine Weight:	145KGS



FR-M5053 | Forearm Machine

Machine Size	: (L*W*H (CM)): 1700*x1745*x1300*
Machine Weight:	150KGS



FR-M5054 | Horizontal Bench Press

Machine Size	: (L*W*H (CM)): 1690*x1680*x1100
Machine Weight:	125KGS



FR-M5055 | Lateral Leg Curl

Machine Size	: (L*W*H (CM)): 1520*x1940*x840
Machine Weight:	165KGS



FR-M5056 | Gripper Machine

Machine Size	: (L*W*H (CM)): 1000*x1570*x1270
Machine Weight:	100 KGS



FR -M5057 | 5 Way Neck Machine

Machine Size :	(L*W*H (CM)): 1245*x1900*x1480*
Machine Weight:	135KGS



FR -M5058 | Pullover Machine

Machine Size :	(L*W*H (CM)): 1460*x1880*x1540*
Machine Weight:	183KGS



FR -M5059 | V Squat

Machine Size :	(L*W*H (CM)): 2440*x1685*x1945*
Machine Weight:	263KGS



FR -M5060 | Adjustable Chest Press

Machine Size :	(L*W*H (CM)): 1890*x1920*x1360*
Machine Weight:	205KGS





FR-M5065

Glute Press

Machine Size	: (L*W*H (CM)): 2250*x1970*x1450*
Machine Weight:	240KGS



FR-M5066

Full Body Press

Machine Size	: (L*W*H (CM)): 2000*x1870*x1435*
Machine Weight:	215KGS



FR-M5067

Dual Action Leg Press

Machine Size	: (L*W*H (CM)): 2250*x1335*x1490*
Machine Weight:	198KGS



FR-M5068

Full Body Squat

Machine Size	: (L*W*H (CM)): 2565*x1930*x1690*
Machine Weight:	335KGS



FR-3001 | Shoulder Press

Machine Size :	(L*W*H (CM)): 1700*x1320*x1500
Machine Weight:	250KGS
Weight Stack:	100KGS



FR-3002 | Vertical Press

Machine Size :	(L*W*H (CM)): 1470*x1500*x1500
Machine Weight:	232KGS
Weight Stack:	100KGS



FR-3003 | Pulldown

Machine Size :	(L*W*H (CM)): 1700*x1550*x1960*
Machine Weight:	272KGS
Weight Stack:	100KGS



FR-3004 | Triceps Extension

Machine Size :	(L*W*H (CM)): 1190*x1120*x1500*
Machine Weight:	228 KGS
Weight Stack:	100KGS



FR -3005 | Double Pullback Trainer

Machine Size :	(L*W*H (CM)): 1300*x1250*x1500*
Machine Weight:	230KGS
Weight Stack:	100KGS



FR -3006 | Leg Extension

Machine Size :	(L*W*H (CM)): 1350*x1250*x1500*
Machine Weight:	260KGS
Weight Stack:	100KGS



FR -3007 | Prone Leg Curl

Machine Size :	(L*W*H (CM)): 1550*x1220*x1500*
Machine Weight:	235KGS
Weight Stack:	100KGS



FR -3008 | Adductor Machine

Machine Size :	(L*W*H (CM)): 1680*x760*x1500*
Machine Weight:	357KGS
Weight Stack:	100KGS



FR-3009 | Abductor Machine

Machine Size :	(L*W*H (CM)): 1680*x760*x1500*
Machine Weight:	257KGS
Weight Stack:	100KGS



FR-3010 | Long Pull

Machine Size :	(L*W*H (CM)): 1960*x1220*x1500*
Machine Weight:	240KGS
Weight Stack:	100KGS



FR-3011 | Diverging lat pull

Machine Size :	(L*W*H (CM)): 1180*x1270*x2130*
Machine Weight:	245KGS
Weight Stack:	100KGS



FR-3012 | Abdominal

Machine Size :	(L*W*H (CM)): 1150*x910*x1450*
Machine Weight:	205 KGS
Weight Stack:	100KGS



FR-3013 | Seated Dip

Machine Size :	(L*W*H (CM)): 1190*x1120*x1500*
Machine Weight:	230KGS
Weight Stack:	100KGS



FR-3014 | Leg Press

Machine Size :	(L*W*H (CM)): 1960*x1220*x1500*
Machine Weight:	315KGS
Weight Stack:	100KGS



FR-3015 | Camber Curl

Machine Size :	(L*W*H (CM)): 1190*x1120*x1500*
Machine Weight:	227KGS
Weight Stack:	100KGS



FR-3016 | Pearl Delt/Pec Fly

Machine Size :	(L*W*H (CM)): 1370*x1420*x2130*
Machine Weight:	265KGS
Weight Stack:	100KGS



FR-3017 | Glute Isolator

Machine Size :	(L*W*H (CM)): 1350*x1020*x1500*
Machine Weight:	233KGS
Weight Stack:	100KGS



FR-3018 | Back Extension

Machine Size :	(L*W*H (CM)): 1220*x1090*x1500
Machine Weight:	240KGS
Weight Stack:	100KGS



FR-3019 | Lateral Raise

Machine Size :	(L*W*H (CM)): 1350*x1250*x1500*
Machine Weight:	245KGS
Weight Stack:	100KGS



FR-3020 | Converging Shoulder Press

Machine Size :	(L*W*H (CM)): 1540*x1500*x1540*
Machine Weight:	280 KGS
Weight Stack:	100KGS



FR -3021 | Leg Curl

Machine Size :	(L*W*H (CM)): 1550*x1250*x1500*
Machine Weight:	260KGS
Weight Stack:	100KGS



FR -3022 | Converging Chest Press

Machine Size :	(L*W*H (CM)): 1630*x1230*x1830*
Machine Weight:	250KGS
Weight Stack:	100KGS



FR -3023 | Seated Calf

Machine Size :	(L*W*H (CM)): 1350*x1120*x1500*
Machine Weight:	225KGS
Weight Stack:	100KGS



FR -3024 | Rotary Torso

Machine Size :	(L*W*H (CM)): 1270*x1370*x1500*
Machine Weight:	225KGS
Weight Stack:	100KGS



FR-3025 | Dumbbell Rack

Machine Size	: (L*W*H (CM)): 2200*x700*x810*
Machine Weight:	94KGS



FR-3026 | Three-layer Dumbbell Rack

Machine Size	: (L*W*H (CM)): 1300*x770*x1050*
Machine Weight:	98KGS



FR-3027 | Vertical Plate Tree

Machine Size	: (L*W*H (CM)): 650*x750*x1200*
Machine Weight:	35KGS



FR-3028 | Seated Preacher Curl

Machine Size	: (L*W*H (CM)): 1080*x930*x925
Machine Weight:	60KGS



FR-3029 | Flat Bench

Machine Size	: (L*W*H (CM)): 1330*x750*x380*
Machine Weight:	35KGS



FR-3030 | Multi-Purpose Bench

Machine Size	: (L*W*H (CM)): 1250*x750*x845*
Machine Weight:	39KGS



FR-3031 | Adjustable Decline Bench

Machine Size	: (L*W*H (CM)): 1335*x1015*x760*
Machine Weight:	64KGS



FR-3032 | Super Bench

Machine Size	: (L*W*H (CM)): 1400*x750*x460*
Machine Weight:	48KGS



FR-3033 | Back Extension

Machine Size :	(L*W*H (CM)): 1335*x1015*x760*
Machine Weight:	64KGS



FR-3034 | Olympic Bench

Machine Size :	(L*W*H (CM)): 1850*x1650*x1300*
Machine Weight:	85KGS



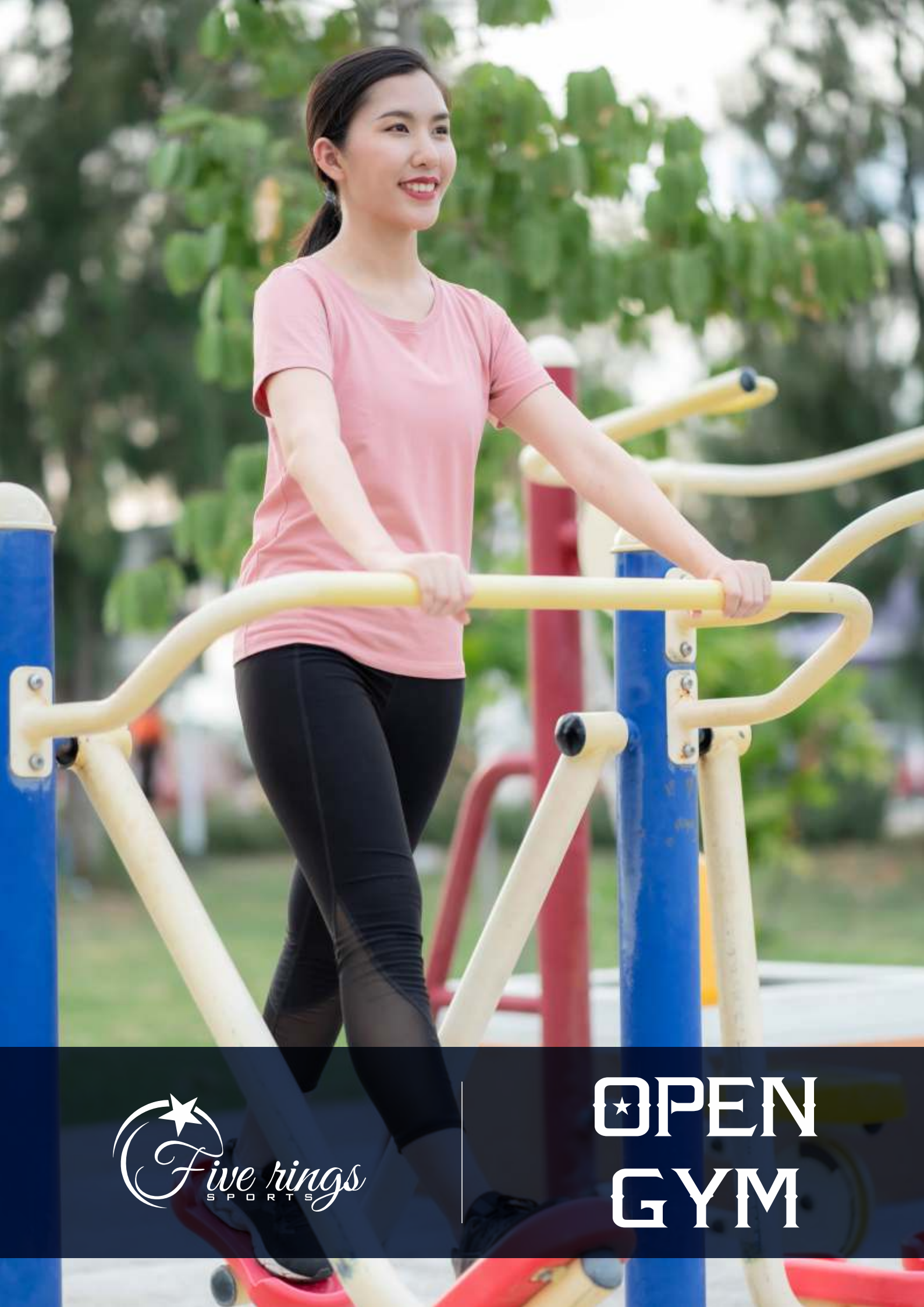
FR-3035 | Olympic Incline Bench

Machine Size :	(L*W*H (CM)): 2000*x1650*x1390*
Machine Weight:	100KGS



FR-3036 | Olympic Decline Bench

Machine Size :	(L*W*H (CM)): 2100*x1650*x1300*
Machine Weight:	98 KGS



OPEN
GYM

PULL AND PUSH UP CHAIR



SPECIFICATIONS

SIZE: 2187 X 902 X 1707 MM,
 BASE PIPE SIZE 4 INCHES ROUND
 SUPPORTIVE PIPES: 2.5 INCHES, PIPE MATERIAL:
 PRE-GALVANIZED (G.I)PIPES
 SEALED BALL BEARING,POWER COATED THREE
 LAYER PAINT
 PVC FOOTREST AND SEAT

FUNCTIONSFUNCTIONS

DEVELOPING THE STRENGTH OF UPPERLIMBS, CHEST
 AND MUSCLE GROUP OF SHOULDER AND BACK.
 IMPROVING THE FLEXIBILITY AND STABILITY OF
 SHOULDER JOINT AND ELBOWS. GOOD FOR BENDING
 AND STREACHING HINDRANCES OF SHOULDER JOINT
 AND ELBOWS, MUSCULARTROPHY, AND HEALING OF
 FROZEN SHOULDER, TENNISE ELBOW ETC.

PUSH UP AND DIP STATION



SPECIFICATIONS

SIZE: 1802 X 612 X 1487 MM
BASE PIPE SIZE 4 INCHES ROUND
SUPPORTIVE PIPES: 2.5 INCHES
PIPE MATERIAL: PRE-GALVANIZED
(G.I)PIPES
SEALED BALL BEARING
POWER COATED THREE LAYER PAINT

FUNCTIONSFUNCTIONS

Develops the strength of upper limbs, shoulder and chest, strengthening cardiac and pneumatic functions. Approaches: Hold the crossbar tight with your hands and lift yourself up ensuring the strength of your arms to do the pull up action. Repeat according to your physical conditions. Users: Suitable for middle-aged people and youths.

SEATED CHEST PRESS



SPECIFICATIONS

SIZE: 1726 X 692 X 1707 MM
 BASE PIPE SIZE 4 INCHES ROUND
 SUPPORTIVE PIPES: 2.5 INCHES
 PIPE MATERIAL: PRE-GALVANIZED
 (G.I)PIPES
 SEALED BALL BEARING
 POWER COATED THREE LAYER PAINT
 PVC FOOTREST AND SEAT

FUNCTIONSFUNCTIONS

Developing the strength of upper limbs, chest and muscle groups of shoulder and back, improving the flexibility and stability of shoulder joints and elbows. Good for healing the bending and stretching hindrances of shoulder joint sand elbows, muscular atrophy, frozen shoulder, tennis elbows, etcZ

AB TRAINER SIT UP DOUBLE



SPECIFICATIONS

SIZE: 1440 X 1468 X 518 MM
BASE PIPE SIZE 4 INCHES ROUND
SUPPORTIVE PIPES: 2.5 INCHES
PIPE MATERIAL: PRE-GALVANIZED
(G.I)PIPES
SEALED BALL BEARING
POWER COATED THREE LAYER PAINT

FUNCTIONSFUNCTIONS

•Developing the strength and flexibility of lumbar and abdominal muscles consuming the fat in waist and abdomen, good for figure shaping and body building.

ELLIPTICAL CROSS TRAINER SINGLE



SPECIFICATIONS

SIZE: 1140 X 706 X 1680 MM
BASE PIPE SIZE 4 INCHES ROUND
SUPPORTIVE PIPES: 2.5 INCHES
PIPE MATERIAL: PRE-GALVANIZED
(G.I)PIPES
SEALED BALL BEARING
POWER COATED THREE LAYER PAINT
PVC FOOTREST AND SEAT

FUNCTIONSFUNCTIONS

Develops the whole-body joints, strengthening cardiac function, and shaping figure.

CROSS TRAINER DOUBLE



SPECIFICATIONS

SIZE: 1140 X 706 X 1680 MM\ 1140 x 706 x 1680 mm, BASE PIPE SIZE 4 INCHES ROUND, SUPPORTIVE PIPES: 2.5 INCHES PIPE MATERIAL: PRE-GALVANIZED (G.I)PIPES
SEALED BALL BEARING
POWER COATED THREE LAYER PAINT
PVC FOOTREST AND SEAT

FUNCTIONSFUNCTIONS

Develops the whole-body joints, strengthening cardiac function, and shaping figure.

PARALLEL BAR



SPECIFICATIONS

SIZE: 2700 x 560 x 1400 MM
BASE PIPE SIZE 4 INCHES ROUND
SUPPORTIVE PIPES: 2.5 INCHES
PIPE MATERIAL: PRE-GALVANIZED
(G.I)PIPES
SEALED BALL BEARING
POWER COATED THREE LAYER PAINT
PVC FOOTREST AND SEAT

FUNCTIONSFUNCTIONS

•A military fitness favorite, dips are one of the most basic exercises for developing the pectorals, deltoid sand triceps Hold yourself at arm s length above the parallel bars and slowly lower yourself, bending until the elbows pass the right angle. A greater range of motion, while remaining comfortable, can help stretch the pectoralis.

RECUMBENT BIKE CYCLE



SPECIFICATIONS

Astatic position. Using this cycling motion works the legs. Strengthening and toning thigh and calf muscles and improving their flexibility. It will also get the heart rate up, burn calories and improve cardiovascular strength. The user can cycle at their own pace, makour upright bicycle gives the rider the sense of using a familiar pedal bike in a static position. Using this cycling motion works the legs. Strengthening and toning thigh and calf muscles and improving their flexibility. It will also get the heart rate up, burn calories and improve cardiovascular strength. The user can cycle at their own pace, making it suitable for all abilities, beginners to advanced. It's also great to use for a warm-up.ing it suitable for all abilities, beginners to advanced. It's also great to use for a warm-up.

PULL CHAIR



SPECIFICATIONS

SIZE: 2700 x 560 x 1400 MM
BASE PIPE SIZE 4 INCHES ROUND
SUPPORTIVE PIPES: 2.5 INCHES
PIPE MATERIAL: PRE-GALVANIZED
(G.I)PIPES
SEALED BALL BEARING
POWER COATED THREE LAYER PAINT
PVC FOOTREST AND SEAT

FUNCTIONSFUNCTIONS

•To perform a pull-up or chin-up, hold onto the bar, use the arms to pull up until the chin is level with or above the bar. Lower again and repeat according to your capability. Pull-ups

COMBINE MACHINE NO:1



SPECIFICATIONS

SIZE: 2700 x 560 x 1400 MM
BASE PIPE SIZE 4 INCHES ROUND
SUPPORTIVE PIPES: 2.5 INCHES
PIPE MATERIAL: PRE-GALVANIZED
(G.I)PIPES
SEALED BALL BEARING
POWER COATED THREE LAYER PAINT
PVC FOOTREST AND SEAT

FUNCTIONSFUNCTIONS

•To perform a pull-up or chin-up, hold onto the bar, use the arms to pull up until the chin is level with or above the bar. Lower again and repeat according to your capability. Pull-ups

COMBINATION



SPECIFICATIONS

SIZE: 2700 x 560 x 1400 MM
BASE PIPE SIZE 4 INCHES ROUND
SUPPORTIVE PIPES: 2.5 INCHES
PIPE MATERIAL: PRE-GALVANIZED
(G.I)PIPES
SEALED BALL BEARING
POWER COATED THREE LAYER PAINT
PVC FOOTREST AND SEAT

FUNCTIONSFUNCTIONS

•To perform a pull-up or chin-up, hold onto the bar, use the arms to pull up until the chin is level with or above the bar. Lower again and repeat according to your capability. Pull-ups



BODY SHAPER CODE NO: 01

Functions: The Body Shaper gives a full-body cardio vascular and toning work-out, pushing with the legs while pulling with the arms against resistance. Works arms shoulders, back legs, abdomen and legs with low impact exercise.

Approaches: Sit on the seat, hold the handles with both hands and put both feet on the pedals. Push with legs and pull on the handles. When exercising, keep your body upright.

Size: -979x572x1024mm **Material:** Pre Galvanized Mild Steel, Material Thickness: 3mm.

Paint: All Weather Double Layer Powder Coated Paint. Sealed Ball Bearing, Steel Seat and Footrest/Foot paddle for long lasting life



ELLIPTICAL EXERCISER CODE NO: 02

Functions: Develops the whole body joints, strengthening cardiac function, and shaping figure.

Approaches: Put your feet on the pedals, holding the handles with your both hands and moving your hands and feet alternately. **Users:** Suitable for people of different ages except children.

Size: -1140x706x1680mm

Material: Pre Galvanized Mild Steel, Material Thickness: 3mm.



CROSS WALKER CODE NO: 03

Functions: Improves the flexibility of lower limbs and hip joint, developing the movement ability and harmonies of up and lower limbs.

Approaches: Holding the handles with both hands and standing on the pedals, then walk back and forth.
Users: Suitable for middle-aged people and elders.

Size: -1612X6051X545mm

Material: Pre Galvanized Mild Steel, Material Thickness: 3mm.

Paint: All Weather Double Layer Powder Coated Paint Sealed Ball Bearing



LEGPRESS CODE NO: 04

Functions: Develops the strength of lower limbs, and improves the stability and agility of three main joints of lower limbs, good for the healing of inconvenience of bending and stretching of lower limbs, and muscular atrophy of lower limbs, rheumatoid arthritis, sciatica, sprain of the ankle bone, etc.

Approaches: Sit on the chair and step on the footboard. Stretching legs with force and recover slowly. Repeat. **Users:** Suitable for people of different ages.
Size: - 2044x494x1504mm

Material: Pre Galvanized Mild Steel, Material Thickness: 3mm. **Paint:** All Weather Double Layers Powder coated paint sealed ball bearing, steel seat stands and footrest/foot paddle long lasting life



DIP STAND/ LEG RAISER CODE NO: 05

Functions: Develops the strength of upper limbs, shoulder and chest, strength rung cardiac and pneumatic functions.

Approaches: Hold the cross bars tight with your hands and lift yourself up, then using the strength of your arms to do the pull-up action. Repeat according to your physical conditions. Users: Suitable for middle-aged people and Youth

Size: -1802x612x1399 mm

Material: Pre Galvanized Mild Steel, Material Thickness: 3mm. Paint: All Weather Double Layer Powder Coated Paint



LEG & THIGH EXERCISER / AIR WALKER CODE NO: 06

Functions: Leg & Thigh Exerciser provides excellent cardio vascular exercise while developing the leg muscles. Allows a full range of movement in the hip joint improving flexibility and strength, without any impact or stress to joint and back. Suitable for all ages. Approaches: Hold the crossbeam with both hands and swing your legs backward and forwards in a walking motion.

Size: -992x505x1380mm Material: Pre Galvanized Mild Steel, Material Thickness: 3mm.

Paint: All Weather Double Layer Powder Coated Paint, Sealed Ball Bearing, Steel Footrest/Foot paddle for long lasting life

Important: Do not swing both legs backwards and forwards at the same time.



AB TRAINER/SIT- UP BENCH CODE NO: 07

Functions: Developing the strength and flexibility of lumbar and abdominal muscles, reducing the fat in waist and abdomen, good for figure shaping and body building. Approaches: Hang up the round pipe with feet, crossing the hands behind head, making body backward to the trainer, recovers.

Size: -1504X1133X624mm

Material: Pre Galvanized Mild Steel, Thickness: 3mm,

Paint: All Weather Double Layer Powder Coated Paint



HIGH PULL CHAIR CODE NO: 08

Functions: Developing the strength of upper limbs and the muscle groups of shoulder region and back. Improving the flexibility, agility and coordination of shoulder joints and elbows. Good for healing aches in Joints and the bending and stretching in drances of joints. Approaches: Sit on the chair and step on the foot board. Stretching leg switch force and recover slowly. Repeat.

Users: Suitable for people different ages.

Notice: Standing on the seat is for bidden Make to 3 sets of movements, repeat each set 5 to 10 min according to your physical conditions. Unsound person doing this should be authorized by their doctor so

Specification: 931x742x1652mm

Material: Steel Use area: 0.7 Square Meter

PULL AND PUSH CHAIR CODE NO: 09



Functions: Developing the strength of upper limbs, chest and muscle groups of shoulder and back, improving the flexibility and stability of shoulder joints and elbows. Good for healing the bending and stretching of shoulder joints and elbows, muscular atrophy, frozen shoulder, tennis elbows, etc.

Approaches: Sit down with your back against the equipment and take hold of the hand grip switch both hands and push forward with effort till your arm extend straight. Revert slowly.

Material: Pre Galvanized Mild Steel, Thickness: 3mm,

Paint: All Weather Double Layer Powder Coated Paint. Sealed Ball Bearing, Steel Seats

SEATED PUSH CHEST PRESS CODE NO: 10



Functions: Developing the strength of upper limbs, chest and muscle groups of shoulder and back, improving the flexibility and stability of shoulder joints and elbows. Good for healing the bending and stretching hindrances of shoulder joint and elbows, muscular atrophy, frozen shoulder, tennis elbows, etc.

Approaches: Sit down with your back against the equipment and take hold of the handgrips with both hands and push forward with effort till your arms extend straight. Revert slowly.

Size : 1726X6921X707mm

Material: Pre Galvanized Mild Steel, Thickness: 3mm.

Paint: All Weather Double Layer Powder Coated Paint. Sealed Ball Bearing, Steel Seats



AIR SWING CODE NO: 11

Functions: By swinging both legs together from side to side the Surfing Board strengthens and develops the lower abdomen hips and thighs, improves balance and co-ordination through "core" activation.

Size: - 1177X942X1446mm

Material: Pre Galvanized Mild Steel, Thickness: 3mm.

Paint: All Weather Double Layer Powder Coated Paint Sealed Ball Bearing, Steel Footrest /Foot paddle for long lasting life



ROWING MACHINE CODE NO: 12

Functions: The rowing action is known to be one of the best forms of exercise, working arms, shoulders, chest, back and abdomen. The Rower offers cardiovascular and toning benefit for all ages.

Approaches: Put your feet on the pedals, hold the handles with both hands, pull the handles towards your body. Repeat simulated rowing action

Size: -1400X1007X834mm

Material: Pre Galvanized Mild Steel, Thickness: 3mm.

Paint: All weather Double Layer Powder Coated Paint, Sealed Ball Bearing, Steel Footrest/Foot Paddle for long lasting life



AIR WHEEL CODE NO: 13

Functions: Increasing mobility of shoulder - elbow, hip- knee joint and strengthening cardiac and pneumatic function.

Approaches: Legs in sitting stance, hold to the hand grips of rotating wheels with both hands and press, turn the wheels in the same or opposite direction for 3-5 minutes.

Size: -1258x1029x1353 Material: Pre Galvanized Mild Steel, Material Thickness: 3mm.

Paint: All Weather Double Layer Powder Coated Paint. Sealed Ball Bearing, Steel Seats for long lasting life

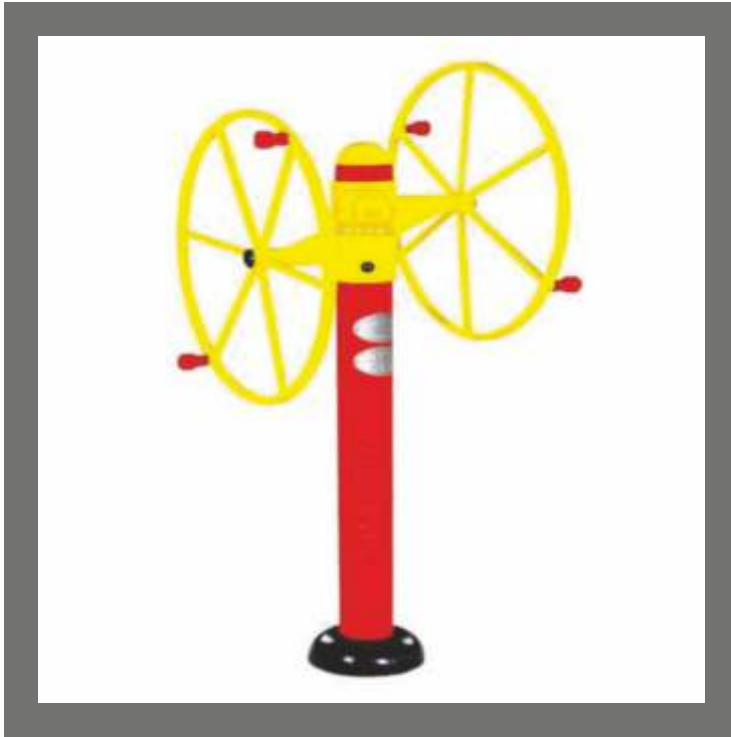


WAIST TWISTER TRIPLE CODE NO: 14

Functions: Developing strength of the waist and hip, improving the flexibility and agility of waist and shaping figure.

Approaches: Stand on the round board with balance, hold the handle with both hands, turn waist from left to right.

Size: - 1365x1708x1292
Material: Pre Galvanized Mild Steel,
Thickness: 3mm. Stainless Steel Nuts, High Quality Durable Steel Seats. Paint: All Weather Double Layer Powder Coated Paint



SHOULDER WHEEL CODE NO: 15

Functions: Building up the muscles of upper limbs, enhancing the flexibility and agility of shoulder joint.

Approaches: -Hold the hand grips of rotating wheel with both hands and body should roll simultaneously clockwise or counter – clockwise following the wheel.

Size: - 863x874x1882 Material: Pre Galvanized Mild Steel, Material Thickness:3mm.

Paint: All Weather Double Layer Powder Coated Paint. Sealed Ball Bearing, Steel Seats for long-lasting life



STANDING TWISTER CODE -16

Functions: Developing the strength of waist and hip, improving the flexibility and agility of waist and shaping figure.

Size: -1596x382x1303mm
Material: Pre Galvanized Mild Steel, Thickness:3mm.

Paint: All Weather Double Layer Powder Coated Paint. Sealed Ball Bearing, Steel Seats for long-lasting life



KNEE-HIPRAISE CODE NO: 17

Functions: Develops the strength of upper limbs, shoulder and chest, strengthening cardiac and pneumatic functions. Approaches: Hold the crossbar tight with your hands and lift yourself up ensuring the strength of your arms to do the pull up action. Repeat according to your physical conditions.

Users: Suitable for middle-aged people and youths.

Size: -1802x612x1487mm **Material:** Pre Galvanized Mild Steel, Material Thickness:3mm.

Paint: All Weather Double Layer Powder Coated Paint



SIT-BENCH CODE NO 18

Functions: Developing the strength and flexibility of lumbar and abdominal muscles consuming the fat in waist and abdomen, good for figure shaping and body building.

Approaches: - Hang up the round pipe with feet, crossing the hands behind head, making body backward to the trainer, recovers.

Size: -1440x1468x518mm

Material: Pre Galvanized Mild steel, Thickness: 3mm,

Paint: All Weather Double Layer Powder Coated Paint



BACK EXTENSION CODE: 19

FUNCTION: The Back Extension equipment strengthens the lower erector spine muscles of the Lower back, as well as the gluteus and hamstring areas. This will also have the effect of improving posture and stability. To perform the exercise, lie forward on the back extension bench with your thighs resting against the green pad and the heels held in the foot bracket. With your hands behind your head, or arms across the chest, slowly raise your upper body to a high comfortable position, extending the lower back until the lumbar curve is increased. Hold briefly, then slowly



PARALLAL BARS CODE: 20

Function: A military fitness favorite, dips are one of the most basic exercises for developing the pectorals, deltoid sand triceps Hold yourself at arm's length above the parallel bars and slowly lower yourself, bending until the elbows pass the right angle. A greater range of motion, while remaining comfortable, can help stretch the pectoralis.

DIMENSIONS: 2700X560X1400MM

Material: Pre Galvanized Mild Steel,
Thickness: 3mm, Main Tube
14mm&3mm

Paint: All Weather Double Layer Powder Coated



HORIZONTAL LADDER CODE NO: 21

FUNCTION: Try swinging down the length of the bars, reaching and grasping, over hand, one bar after the other. Stronger and/or lighter individuals will be able to use more of a bent arm. You can also simply use the equipment for chin-ups, using a variety of grips. Also, try lifting the knees and legs while hanging, helping to build abdominal strength.

DIMENSIONS: 3000*1100*2400MM

Material: Pre Galvanized Mild Steel, Thickness: 3mm. Main Tube 114mm & 3mm

Paint: All Weather Double Layer Powder Coated Paint



HORIZONTAL BARS CODE: 22

FUNCTION: To perform a pull-up or chin-up, hold onto the bar, use the arms to pull up until the chin is level with or above the bar. Lower again and repeat according to your capability. Pull-ups /Chin-ups can be done with two hand grips, forward or reverse, each strengthening different muscles.

DIMENSIONS: 2700X560X1400MM

Material: Pre Galvanized Mild Steel, Material Thickness: 3mm. Main Tube 114mm & 3mm

Paint: All Weather Double Layer Powder Coated Paint

NEW GENERATION OF

WORKOUT

Cardio



FR-3037 | Squat Rack

Machine Size :	(L*W*H (CM)): 1710*x1620*x1890*
Machine Weight:	124KGS



FR-3038 | Smith Machine

Machine Size :	(L*W*H (CM)): 1420*x2140*x2300*
Machine Weight:	180KGS



FR-3039 | Prensa Inclínada De Piernas

Machine Size :	(L*W*H (CM)): 2390*x1450*x1440*
Machine Weight:	252KGS



FR-3040 | Hack Squat

Machine Size :	(L*W*H (CM)): 2110*x1600*x1440*
Machine Weight:	206KGS



FR-510 | Commercial Heavy Duty Treadmill

Machine Size :	(L*W*H (CM)): 2265*x945*x1640*
Machine Weight:	256KGS

A60 Luxury commercial treadmill
European high-tech is adopted; streamlined design for the whole unit makes it a perfect combination of luxury and fashion.
Special design for rollers effectively prevents off-center problems with the running belt and improves the stability of usage.
The unique method to assemble Uprights and Console makes the machine more stable and durable.
High-strength shockproof elastic running board, imported quality Inverter and running belt increase product durability and enhance its Safety.
Keys: Press-type, SPEED keys, INCLINE keys, the user can adjust the values in Time/Distance/Calorie countdown mode.

Fashionable and unique Design Concept; color matching with rich connotation; smooth lines and graceful look.

Modest, Stable; Luxury.

System Controller: Customized treadmill system controlling software.

The special way to fix uprights and console improve product stability and exercise stability.

Antistatic design for the whole unit prevents any exposed metal and fully ensures safety during exercise.

Drive motor: Super mute AC motor. Continuous power: 3.0HP; peak power: 7.0HP.

Special design for rollers effectively prevents off-center problems with running belt and improves the stability of usage.

Keys: Press-type, speed keys, incline keys, the user can adjust the values in Time/Distance / Calorie Countdown mode.



FR-511 | Commercial Treadmill

Machine Size :	(L*W*H (CM)): 2225*x930*x1685*
Machine Weight:	222KGS

European high-tech is adopted; streamlined design for the whole unit makes it a perfect combination of luxury and fashion.

Antistatic design for the whole unit prevents any exposed metal and fully ensures safety during exercise.



FR -502 | Commercial Heavy Duty Treadmill

Machine Size	: (L*W*H (CM)): 2320*x1020*x1840*
Machine Weight:	254KGS

FR -503 | Commercial Treadmill

Machine Size	: (L*W*H (CM)): 2230*x878*x1660*
Machine Weight:	360KGS

A400 is a classic running machine, continues to sell well. the whole machine sends out the extreme movement breath, A400 with dynamic fashion modeling, rich configuration and exquisite workmanship and other characteristics, has become the customer's preferred aerobic equipment.

Keys: Press-type, speed keys, incline keys, the user can adjust the values in Time/Distance/Calorie countdown mode.





Adopts international leading design-streamlined appearance design, which perfectly combines luxury and fashion.

The 18.5-inch large screen gives the user a more comfortable visual effect.

The treadmill emergency stop button has a unique design that effectively extends the life of the emergency stop button. Make sure the users have the best running experience.

FR -504 | Commercial Treadmill

Machine Size	: (L*W*H (CM)): 2230*x878*x1660*
Machine Weight:	360KGS

1. Shape: curved treadmill
2. Belt: High strength running belt
3. Upright: D shape tube 170*66*3 mm
4. Monitor: 5" control Display, include time, speed, distance, Calorie
5. Running space: 1500mm*440mm
6. Safety speed: 0-20Kg/h
7. Treadmill Size: 1780-845*1520mm
8. N.W/G.W: 165kg / 220kgs
9. Max Bearing : 150kg

FR -505 | Commercial Curved Treadmill

Machine Size	: (L*W*H (CM)): 1780*x845*x1520*
Machine Weight:	220KGS



Military-grade multi-dimensional foot pedals, which can stabilize the body during exercise, and each stretching action is effectively protected.
Ergonomically designed handle with foam wrap and breathable perspiration comfortable to use.
High quality aluminum alloy track, smooth, beautiful, strong and durable.
The rolling wheel is designed to be neat and tidy, which can be moved by one person. '



FR -502 | Water Rowing Machine

Machine Size	: (L*W*H (CM)): 2040*x540*x520*
Machine Weight:	60KGS



FR -503 | AIR ROWER

Machine Size	: (L*W*H (CM)): 2435*x610*x1130*
Machine Weight:	32KGS

The panel adopts LED double-color wide display window. which can Simulate the display training mode and the state of motion, the technology of blew backlight keys makes users more comfortable Easy to operate wider visual angle, more comfortable, no harm to eyes, Display function time, distance, Speed, Calories, heart rate and exercise mode. Mode, Combination of automatic mode and memory mode.

The whole vehicle has the function of hand-held heartbeat and heart rate recovery.

Resistance Control, Section 1-16 EMS Spontaneous Electromagnetic Control System

The flywheel adopts a precise adsorption resistance abjustment system with strong magnetic magnets.

Output voltage, 220V 50HZ, 6VDC 1A

Power System: self-generating type

Advantages:

Super large fixed handrails are safe and more comfortable.

Super large loot pedal design. softer and more comfortable.

The vehicle platform is equipped with a storage box to facilitate the movement of small part such as mobile phones

The car is an electromagnet controlled self-generating system with high precision resistance.



FR-E401 | Commercial Elliptical Machine

Machine Size :	(L*W*H (CM)): 2100*x640*x1800*
Machine Weight:	174KGS

FR-E402 | Commercial Elliptical Machine

Machine Size :	(L*W*H (CM)): 2280*x750*x1635*
Machine Weight:	150KGS





The pipes are made of aluminum alloy and they are subjected to high- grade corrosion-resistant experiments and can be used in a variety of environments.

Ergonomically designed pu saddle cushion from Taiwan is elegant and more comfortable.

Strengthened frame which is made of flat oval pipes and square pipes, durable and stable.

With its own fashionable sport kettle rack, the users can replenish water at any time in the process of sport.

Chain rotation, two-way operation, free choice.

FR -S301 | Water Rowing Machine

Machine Size	: (L*W*H (CM)): 2040*x540*x520*
--------------	---------------------------------

Machine Weight:	60KGS
-----------------	-------

FR -S302 | Commercial Spinning Bike

Machine Size	: (L*W*H (CM)): 1160*x585*x1220*
--------------	----------------------------------

Machine Weight:	73KGS
-----------------	-------



FR -S303 | Spining Bike

Machine Size	: (L*W*H (CM)): 1120*x580*x1140*
--------------	----------------------------------

Machine Weight:	73KGS
-----------------	-------



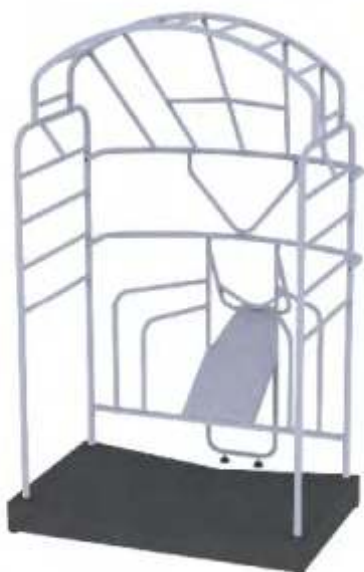
FR-01 | Skiing Machine

Machine Size :	(L*W*H (CM)): 1250*x580*x2130*
Machine Weight:	45KGS



FR-02 | Ab Solo

Machine Size :	(L*W*H (CM)): 2135*x1040*x1780*
Machine Weight:	98KGS



FR-03 | Stretch

Machine Size :	(L*W*H (CM)): 1415*x1360*x2250*
Machine Weight:	135KGS



FR-04 | Tank

Machine Size :	(L*W*H (CM)): 1330*x870*x1015*
Machine Weight:	93KGS



FR-705 | 3D SMITH MACHINE

Machine Size :	(L*W*H (MM)): 2110x2045x2245
Machine Weight:	340KGS



FR-710 | MULTI FUNCTIONAL TRAINER

Machine Size:	(L*W*H (MM)): 1950x1040x2350
Machine Weight:	345KGS
Weight Stack:	70KGSx2



FR-360 | CROSS FIT

Machine Size :	(L*W*H (MM)): 5375x4610x2290
Machine Weight:	1140 KGS



FR-725 | TYRE FLIP MACHINE

Machine Size :	1585*545mm
Machine Weight:	50KGS



Sports WEAR

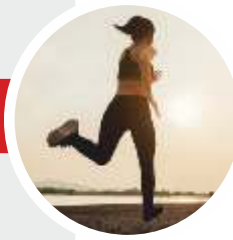


TRACK SUITS - YOGA WEAR - GYM WEAR - CHEERLEADERS
UNIFORM

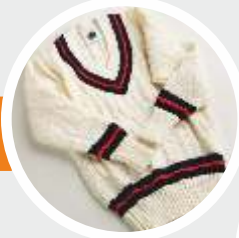


BASKETBALL

ATHLETIC WEAR



CRICKET



HOCKEY



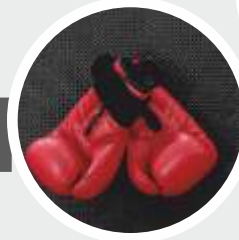
HANDBALL



FOOTBALL



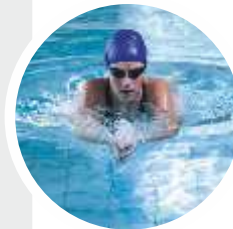
BOXING



GYMNASTICS



SWIMMING



JUDO



KABADDI



WEIGHT LIFTING



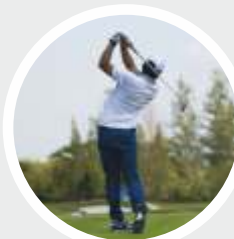
TAEKWONDO



TENNIS



GOLF



POLO



VOLLEYBALL



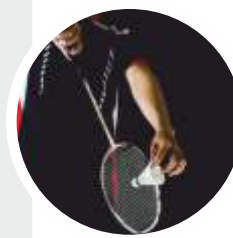
ARCHERY



SHOOTING



BADMINTON





OPTIONS:

DRI-FIT TRACK SUIT
 STRETCHABLE ALL SEASON
 TRACK SUIT
 WINTER WEAR TRACKSUIT
 LIGHT WEIGHT ALL SEASON
 TRACKSUIT
 SUPER POLY TRACKSUIT
 POLYESTER TRACKSUITS
 SPANDEX
 NYLON TRACKSUITS



Product Style	Tracksuits
Gender	Unisex, adult, youth, kids
Color	The same as the photos, or customer's specific requirements
Fabric & Technic	100%polyester fabric; or custom
Stitching	Flat wagon stitching, flatlock stitching, four needles six lines stitching, three needles five lines overlock, other normal stardand stitching
Artwork Technic	Sublimaiton, Silk Screen, Embroidery, Heat transfer, applique and so on
Printing	Any colors, logos, patterns and mock up can be sublimated, never fading. Also accept tag lable, size lable or other label custom
Sizes	Any sizes, adult 2XS -4XL, youth 2XS -4XL
Features	Anti-Pilling, Anti-Shrink, Anti-Wrinkle, Breathable, Eco -Friendly, Quick Dry, no t easily deformed, wear resistant
Price	Calculate with different request, the more quantity, the lower unit price
MOQ	1sample acceptable
Sample charge	depends on details request
Sample time	5-7 working days after receive payment
Mass production time	20-25days after confirm all details
Packing	1pcs in a polybag, 40pcs/ctn, ctn dimension 35*35*50cm
Payment term/method	TT 30~40% deposit , smaller order 100% deposit
Shipping way	By express(DHL, Fedex, UPS), by sea cargo, by air cargo

TRACK PANTS



SLIM DRI-FIT, LIGHT WEIGHT POLYESTER, SPANDEX, NYLON

T-SHIRTS



DRI-FIT, ROUND NECK, COLLARED

SHORTS



REGULAR & UNISEX AVAILABLE

CAPS



SOCKS (All sports)



VESTS



5

**FIVE RING
SPORTS**

**APPAREL
& more**

SPORTS BAGS



TIGHTS (LONG)



TIGHTS (SHORT)

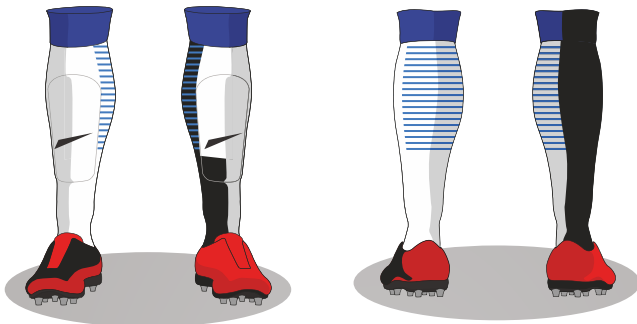


GYM WEAR (UNISEX)



PROMOTIONAL TEES



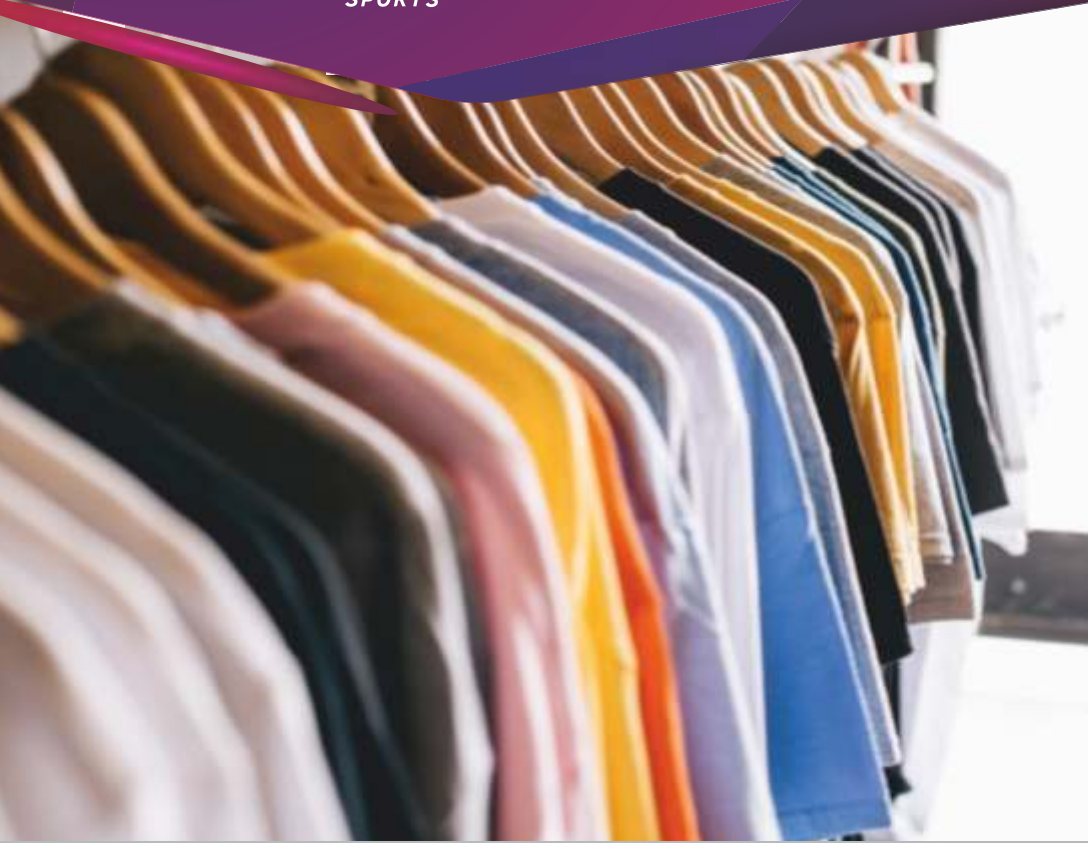


Athletics
Cricket
Badminton
Basketball
Boxing
Handball
Hockey Judo
Kabaddi
Karate
Swimming
Table Tennis
Lawn Tennis
Volleyball
Weightlifting
Taekwondo
Karate etc.





FABRICS & PRINTING



**SUBLIMATION
SCREEN PRINTING
WATER BASED**

**FOR PERFORMANCE
FABRICS:**

**Plastisol
Discharge
Silicon
Embroidery
Heat Transfer
Vinyl**

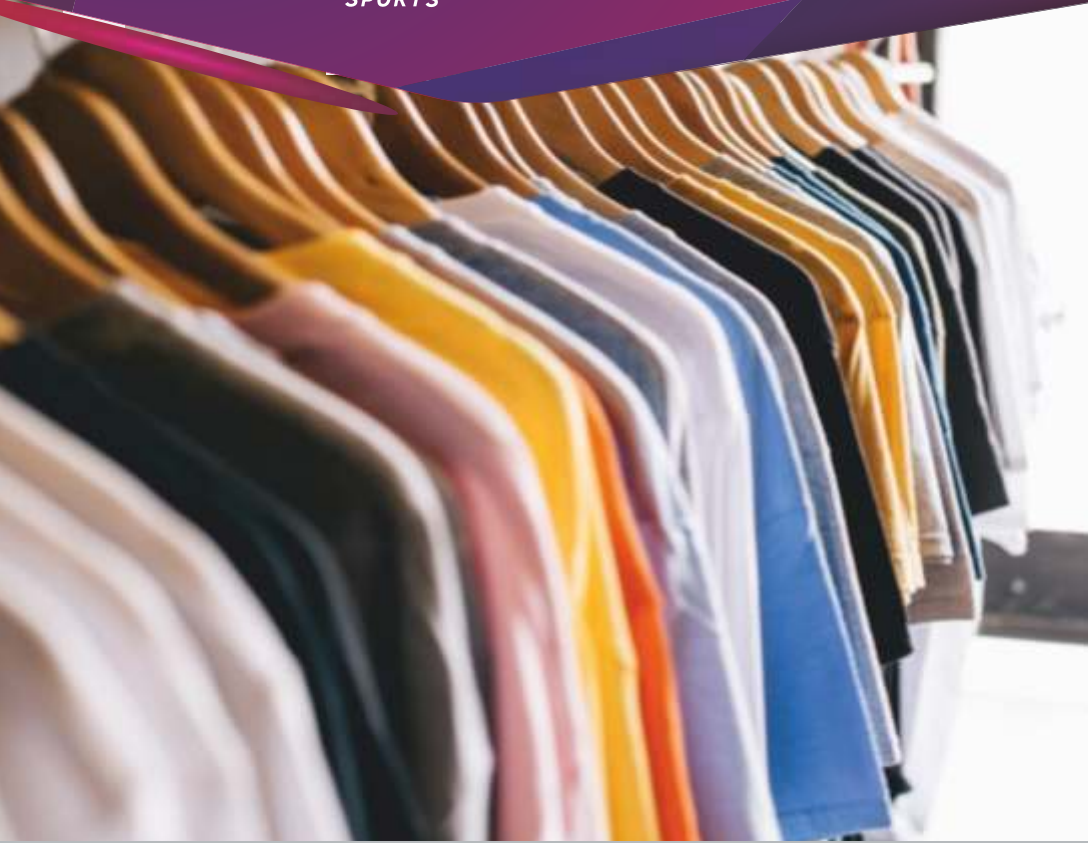
FABRICS:

**Cotton Lycra
Cotton
Polyester
Poly Lycra
Dry-fit**





FABRICS & PRINTING



**SUBLIMATION
SCREEN PRINTING
WATER BASED**

**FOR PERFORMANCE
FABRICS:**

**Plastisol
Discharge
Silicon
Embroidery
Heat Transfer
Vinyl**

FABRICS:

**Cotton Lycra
Cotton
Polyester
Poly Lycra
Dry-fit**





- * Mat
- * Balance Beam
- * Foam Mat
- * Vault Safety Zone
- * Mat Tape
- * Cleaner & Disinfectant
- * Accessories





- * Baseball bat
- * Baseball ball
- * Gloves
- * Helmets
- * Catchers gear
- * Bags
- * Tee ball
- * Training aids
- * Back stops
- * Accessories





- * Basketball ball
- * Backboards
- * Clothing
- * Goals
- * Basketball nets
- * Basketball ring
- * Accessories





- * Football Boots
- * Football (match-ball)
- * Football (practice-ball)
- * Mini portable goal post (4*3)
- * Bib's (3*15)
- * Goal Net (nylon)
- * Swiss Ball
- * Jersey
- * Shorts
- * Stockings
- * Goal keeping glove
- * Marking Tray
- * Ball Carrying net
- * Electric Pump
- * Corner Flag pole (Fiber)
- * Corner Flag
- * Accessories



GOLF

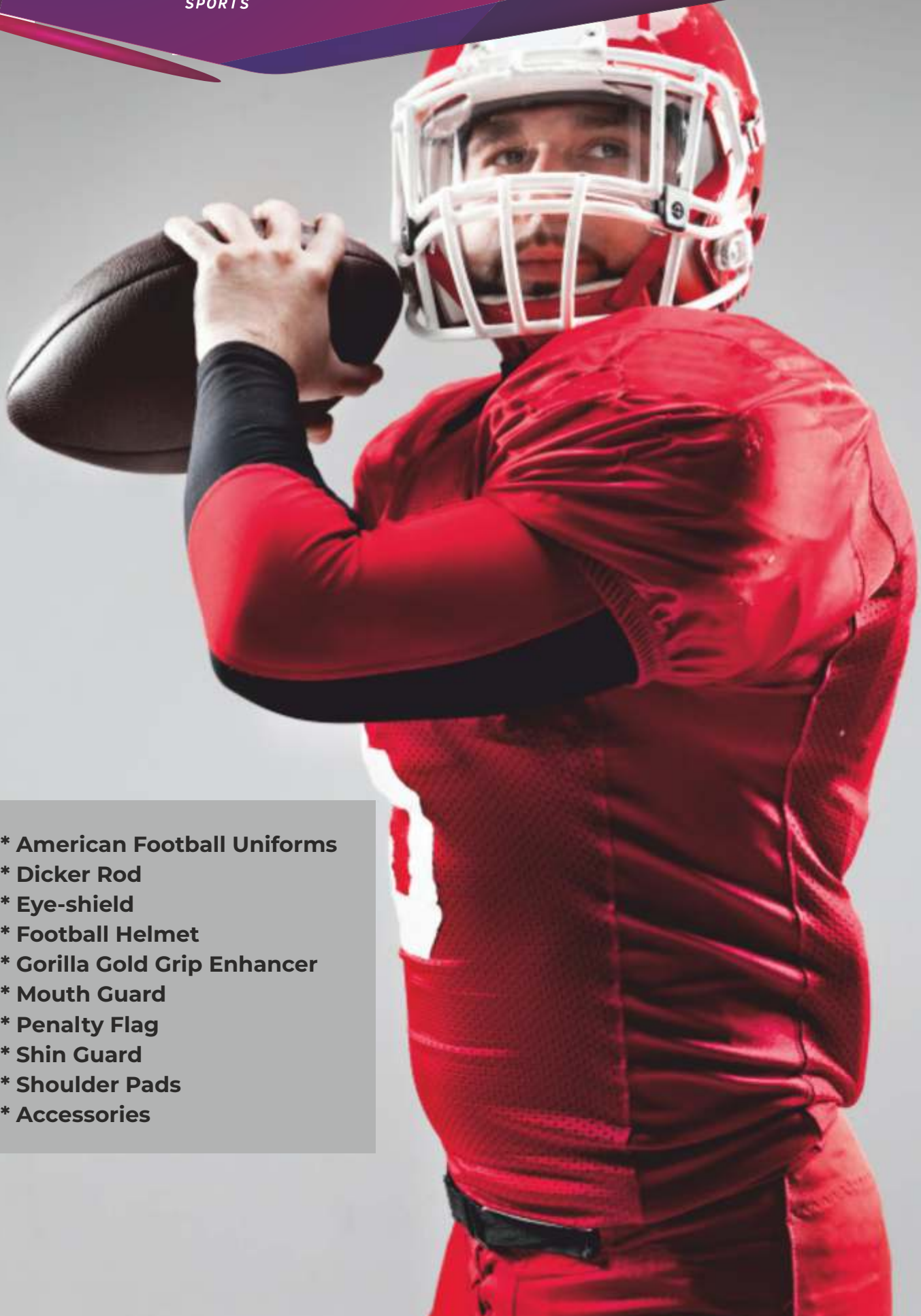
- * Golf Ball
- * Golf Clubs
- * Ball Markers
- * Tees
- * Golf Bag
- * Golf Cart
- * Towels
- * Club Head Covers
- * Ball Mark Repair Tool
- * Clothing
- * Gloves
- * Shoes
- * Accessories



- * Bat
- * Ball
- * Thigh Pad
- * Chest Pad
- * Helmet
- * Kit Bag
- * Batting Gloves
- * Elbow Guard
- * Wicket Keeping Gloves
- * Wicket Keeping (Inner Gloves)
- * Wicket Keeping (Leg Guard)
- * Batting Leg Guard
- * Inner Thigh Guard
- * Stumps
- * Bat Catch-Practice
- * Reaction Ball
- * Mat
- * Net
- * Medicine Kit Box
- * Cricket Accessories



AMERICAN FOOTBALL



- * American Football Uniforms
- * Dicker Rod
- * Eye-shield
- * Football Helmet
- * Gorilla Gold Grip Enhancer
- * Mouth Guard
- * Penalty Flag
- * Shin Guard
- * Shoulder Pads
- * Accessories



- * Swimming Goggles
- * Swim Cap
- * Life Saving Equipment
- * Wet-Suit
- * Accessories

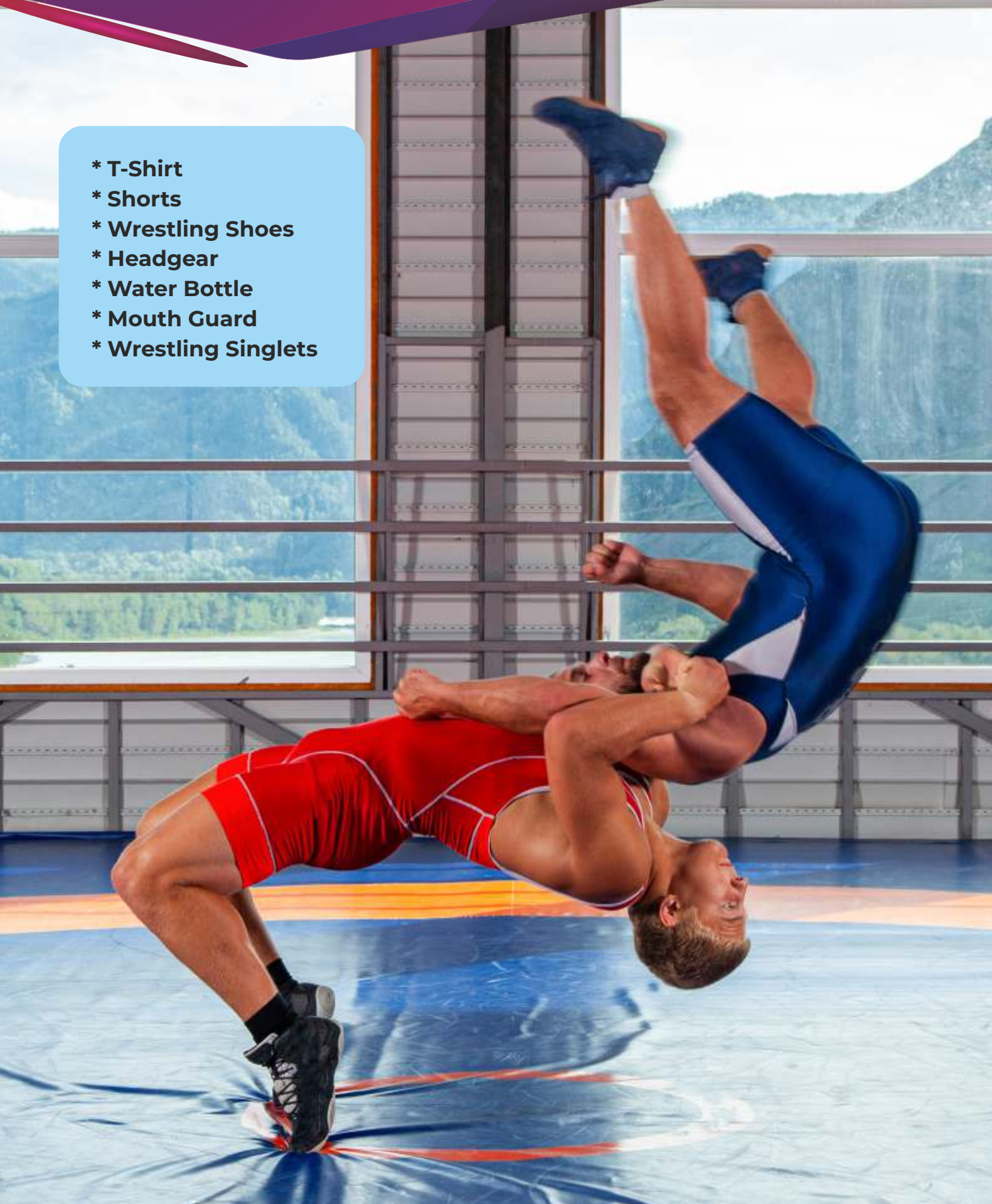




- * Boxing Gear
- * Boxing Gloves
- * Heavy Bags
- * Punching Bags
- * Mouth Guard
- * Protective Head Gear
- * Boxing Shoes
- * Supporter & Cup
- * Pads
- * Accessories



- * T-Shirt
- * Shorts
- * Wrestling Shoes
- * Headgear
- * Water Bottle
- * Mouth Guard
- * Wrestling Singlets





- * Badminton Rackets
- * Badminton Shuttlecock
- * Badminton Net
- * Accessories

- * Hockey Stick
- * Turf Ball
- * Goal Net
- * Hockey Goal Keeper Kit
- * Corner Flag
- * Bibs
- * Hockey Kit Bag
- * Teeth Guard And Shin Pads





- * Helmet
- * Neck Guard
- * Shoulder Pads
- * Elbow Pads
- * Hockey Jersey
- * Hockey Gloves
- * Jockstrap
- * Garter
- * Shin Guards
- * Hockey Socks
- * Mouth Guard
- * Ice Skates
- * Hockey Puck
- * Hockey Stick
- * Goal Stick
- * Goal Skates
- * Chest & Arm Protector
- * Accessories





FIVE RING
SPORTS

VOLLEYBALL

- * **Volleyball Ball**
- * **Volleyball Cotton Nets**
- * **Volleyball Fiber Antennas**
- * **Accessories**





HANDBALL/SOFTBALL

- * Handball Ball
- * Handball Post
- * Handball Net
- * Accessories





- * Tennis Rackets
- * Tennis Balls
- * Net
- * Bag
- * Accessories



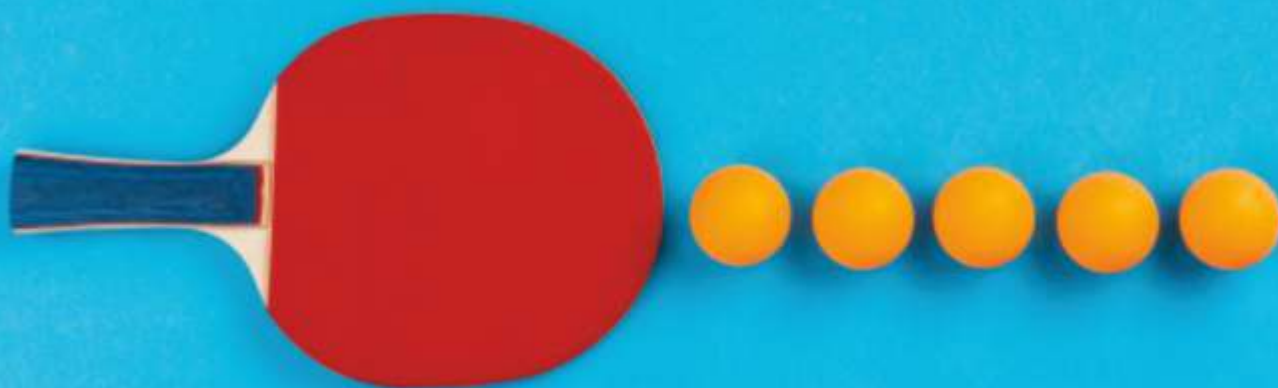


**FIVE RING
SPORTS**

TABLE TENNIS



- * Table Tennis Net
- * Table Tennis Board
- * Table Tennis Ball
- * Racquet
- * Accessories





- * Shooting Gun
- * Shooting Glasses
- * Shooting Targets
- * Slings
- * Holsters
- * Bi-pods
- * Airguns
- * Airguns Ammunition
- * Ammo Boxes
- * Ammo Belts
- * Accessories

5

**FIVE RING
SPORTS**

MOTORBIKE RACING

- * Racing Motor Cycle
- * Racing Suits
- * Shoes
- * Gloves
- * Racing Helmets
- * Jackets
- * Accessories





CYCLE RACING

- * Triathlon Bicycles
- * Aerobars
- * Triathlon Shoes
- * Hydration Systems
- * Accessories



- 
- Training Ball
 - Drawstring Carry Bag
 - Match Balls
 - Goal Posts
 - Tackle Shield (wedged)
 - Tackle Bag
 - Hit Shield
 - Training Equipment
 - Water Bottle
 - Training Cones
 - Kit Bag
 - Whistle & Lanyards
 - Tee Shirt
 - Vest
 - Shorts



CONTACT US:

B3/623

Naya Gaon

Distt. Mohali (Punjab)

INDIA 160103

Mob.:

9478737407

fiveringssports@gmail.com

www.fiveringssports.com